



# Stainless Steel Sliding Door Hardware

**HENDERSON**

*Design in Motion*

January 2013

# CONTENTS

2	<b>AN INTRODUCTION TO PC HENDERSON</b>
3	<b>TRACK, GUIDE CHANNEL, GUIDES</b>
4	<b>STAINLESS STEEL BRACKETS</b>
5	<b>STAINLESS STEEL BRACKETS</b>
6	<b>STAINLESS STEEL HANGERS</b>
7	<b>280/SS STAINLESS STEEL HARDWARE</b>
8	<b>290/SS STAINLESS STEEL HARDWARE</b>
9	<b>290/SS STAINLESS STEEL HARDWARE</b>
10	<b>301/SS STAINLESS STEEL HARDWARE</b>
11	<b>301/SS STAINLESS STEEL HARDWARE</b>

PC Henderson has long been acknowledged as the world leader in the design and manufacture of sliding and folding door hardware systems for residential, commercial and industrial applications.

Established in 1921, PC Henderson is based in Bowburn in North East England and has subsidiaries in Holland and Ireland. The company has a long established sales and distribution network in over 70 countries supported by Henderson's fully trained UK based technical sales team.



The company is committed to quality and is registered to BS EN ISO 9001 Quality Systems and Environmental Management Systems ISO 14001.

As part of this commitment this brochure has been printed on carbon neutral paper in line with the FSC which promotes responsible management of the world's forests. This accreditation guarantees that only the amount of wood which the forest can regenerate naturally is cut down with minimal impact on the environment, wildlife and the indigenous people who reside there.

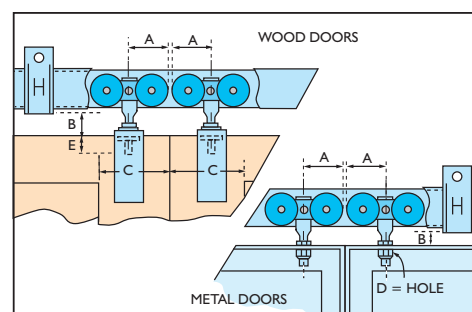


MIX  
Paper from  
responsible sources  
FSC® C014866



www.carbonbalancedpaper.com  
CBP00021251912124559

Since 1921 Henderson has been developing Sliding Gear Systems to enable almost any object to slide. Throughout the world Henderson gear is used for a wide variety of applications ranging from domestic wardrobes to 8 tonne aircraft hanger doors. For areas exposed to extreme levels of corrosive elements or where a high level of hygiene is essential, Henderson has developed a stainless steel range. Manufactured from high quality stainless steel and incorporating the latest polymers, this gear offers a high level of performance and corrosion resistance. The Henderson Stainless Steel range can be used for an array of applications including chemical factories, oil rigs, abattoirs, cold storage, food processing plants and areas exposed to salt water. Whatever the conditions, Henderson Stainless Steel Gear will perform.



- A = Distance from the centre of the hanger to wheel
- B = Vertical adjustment distance
- C = Minimum door stile width
- D = Diameter of holes (Steel doors)
- E = Hole depth for pendant bolt

Wood Doors	Stainless track	280	290	301
	Hangers	284/N	53	53
A		29.5	43.5	67.5
B	Min.	14	22	32
	Max.	24	28	70
C		-	115	115
E		20	22	60

Metal Doors	Stainless track	280	290	301
	Hangers	285/N	56	56
A		29.5	43.5	67.5
B	Min.	6	10	20
	Max.	24	25	63
D		8.5	10.5	17

# 280/SS, 290/SS, 301/SS

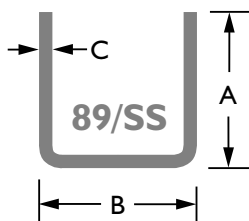
## TRACK, GUIDE CHANNEL, GUIDES

Track	Dimensions mm			Capacities for straight sliding doors		
	C	A	B	Max. Door weight	Max. Door height	Door thickness
280/SS	1	28.5	31.7	50/100kg	2400	20 to 50
290/SS	1.5	45	39	150kg	3000	35 to 48
301/SS	2.5	68	56	270kg	3600	43 to 57

Material: All track and channel in grade 316L (A4) stainless steel

Supply lengths: 2000mm and 3000mm

Channel	Dimensions mm		
	C	A	B
89/SS	1.5	20	20.5

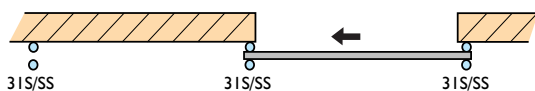
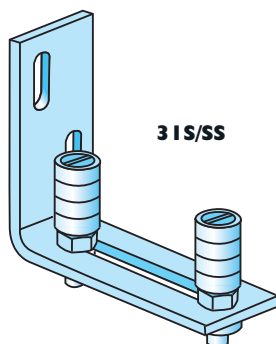


Guides and guide channels are essential for stability, safety and functioning of the system

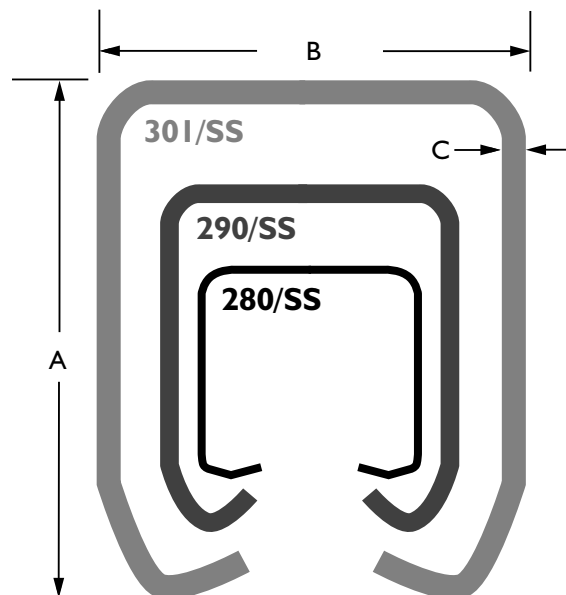
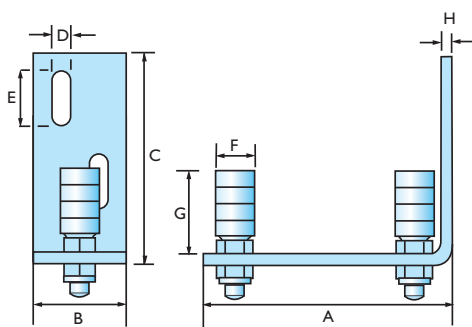
### Guide 31S/SS

Grade 316(A4) stainless steel angle with horizontal adjustable nylon guiding wheels on grade 304(A2) stainless steel bolts.

Guide 31S/SS gives unhindered access and is suitable for applications where dirt might enter the guide channel and hinder sliding.



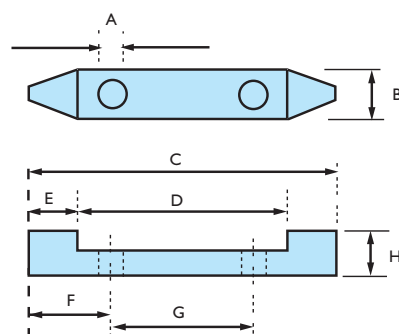
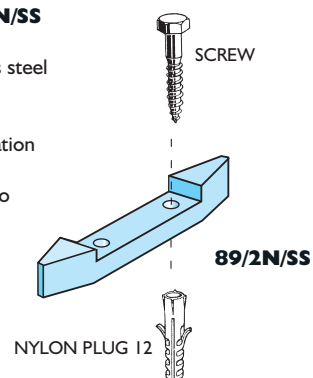
Guide	Dimensions mm							
	A	B	C	D	E	F	G	H
31S/SS	135	50	115	11	25	22	60	4
89/2N/SS	9	16	150	80	35	48	54	25



### Torpedo guide 89/2N/SS screw-in type

Nylon guide with stainless steel fixings.

Torpedo guide in combination with 89/SS guide channel rebated in door or fixed to underside of door.



# STAINLESS STEEL BRACKETS

## SOFFIT/FACE FIXED

I/SS	Dimensions mm					
	A	B	C	D	E	Bolt
28I/SS	20	7	28	40	-	M5
I/290/SS	86	20	50	42	25	M8
I/301/SS	110	27	66	66	33	M10

IX/SS	Dimensions mm					
	A	B	C	D	E	Bolt
IX/290/SS	86	20	50	100	25	M8
IX/301/SS	110	27	66	113	33	M10

3/SS	Dimensions mm					
	A	B	C	D	E	Bolt
3/290/SS	76	-	88	40	65	M8
3/301/SS	99	-	136	60	106	M10

3X/SS	Dimensions mm						
	A	B	C	D	E	F	Bolt
3X/290/SS	76	-	88	40	65	-	M8
3X/301/SS	99	-	136	60	106	-	M10

### Brackets and centre-to-centre distance

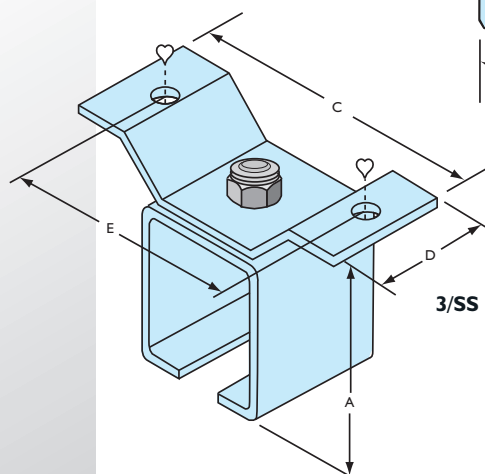
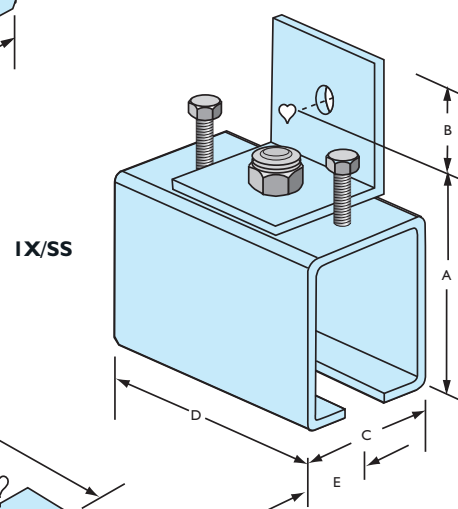
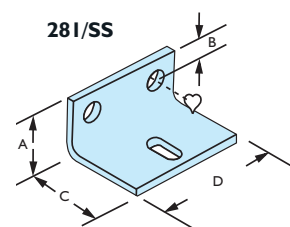
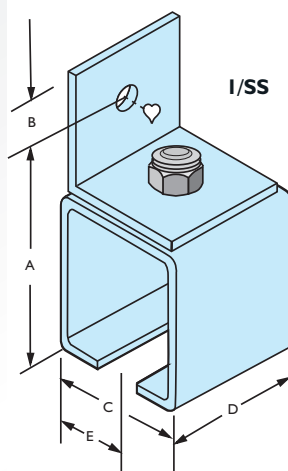
The centre-to-centre distance of the brackets can vary depending on track length. Recommended spacing is 600mm and in case of maximum load 500mm.

Joining brackets are required at each track joint, the letter 'X' denotes the joining bracket.

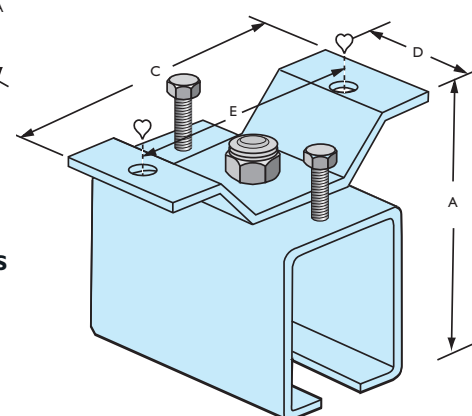
It is recommended should stainless steel brackets or track be fitted directly to a material which is not of stainless steel that a packing be placed between the two surfaces to avoid possible contact corrosion.

All brackets are made in grade 316(A4) stainless steel, all nuts and bolts in grade 304(A2) stainless steel.

**For fixing of all stainless steel sliding door hardware stainless steel fixings must be used.**



3/SS



3X/SS



# STAINLESS STEEL BRACKETS

## SOFFIT FIXED

4/SS	Dimensions mm					
	A	B	C	D	E	Bolt
4/290/SS	76	-	40	88	65	M8
4/301/SS	99	-	60	136	106	M10

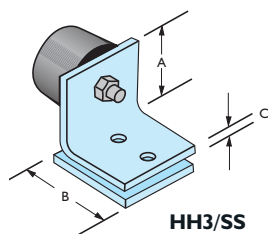
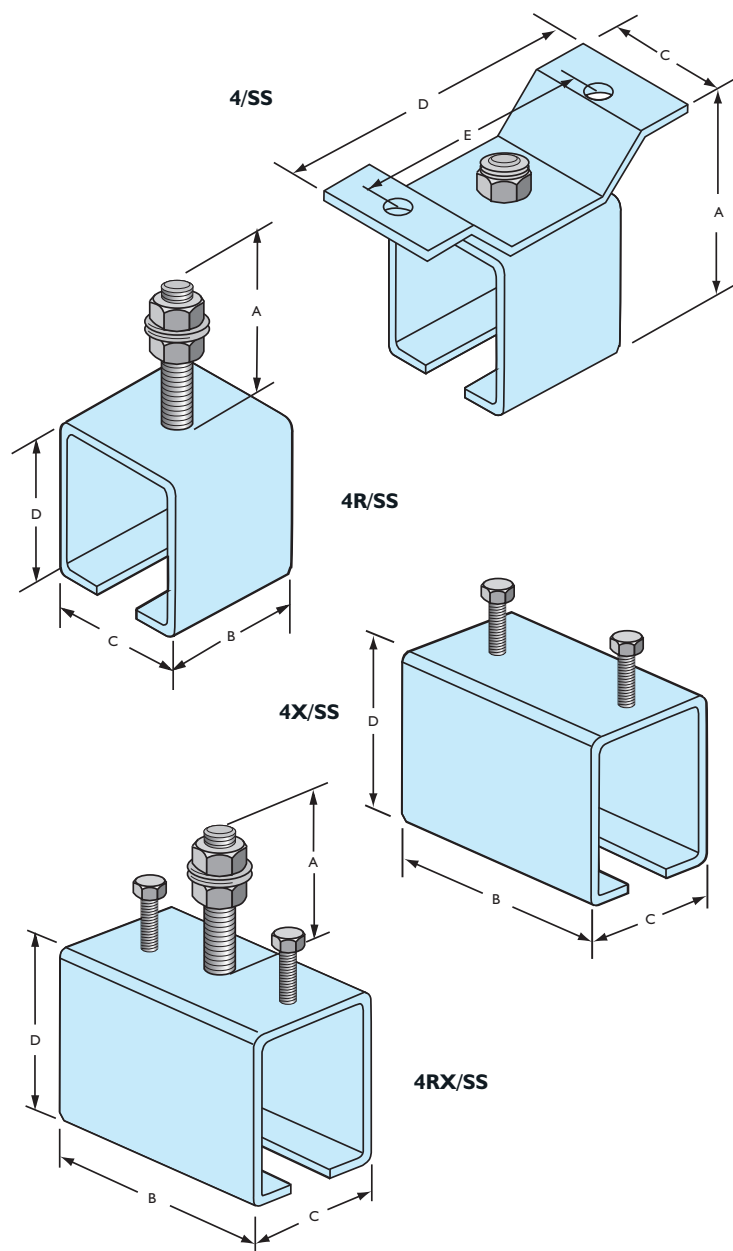
4R/SS	Dimensions mm					
	A	B	C	D		Bolt
4R/280/SS	50	50	37	39		M8
4R/290/SS	50	42	50	56		M10
4R/301/SS	65	66	66	80		M12

4X/SS	Dimensions mm					
	A	B	C	D		Bolt
4X/290/SS	-	100	50	56		M10
4X/301/SS	-	113	66	80		M12

4RX/SS	Dimensions mm					
	A	B	C	D		Bolt
4RX/280/SS	50	50	37	39		M8
4RX/290/SS	50	100	50	56		M10
4RX/301/SS	65	113	66	80		M12

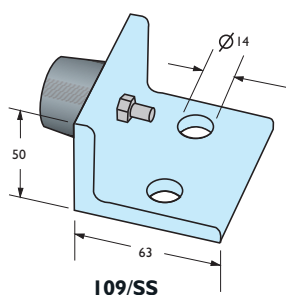
HH3/SS	Dimensions mm		
	A	B	C
HH3/290/SS	31	31	4
HH3/301/SS	40	40	5

I09/SS	Dimensions mm		
	A	B	C
I09/SS	63	50	14



### HH3/SS Stops

Stops HH3/290/SS and HH3/301/SS for fitting in 290 and 301 track. Complete with rubber stop and grade 304(A2) stainless steel hexagonal screws.



### I09/SS Doorstop

Doorstops can be fitted at ground height or on the wall of an opening. (2/3 of the door height from the ground).

# STAINLESS STEEL HANGERS

Track type	Hanger	Dimensions mm					Max. door capacity*
		A	B	C	D	Ø	
280	<b>284N/SS</b>	62.5	27.5	21	80	8	50kg
280	<b>285N/SS</b>	62.5	27.5	-	-	8	50kg
280	<b>284/SS</b>	62.5	27.5	21	80	8	100kg
280	<b>285/SS</b>	62.5	27.5	-	-	8	100kg

Hanger body and wheels of high-performance nylon. All metal components in grade 304(A2) stainless steel.

\* Maximum door capacity means the maximum weight of each door carried by two hangers.

Track type	Hanger	Dimensions mm							Max. door capacity*
		A	B	C	D	E	F		
290	<b>53/290/SS</b>	87	180	77	37	43/58	3		150kg
301	<b>53/301/SS</b>	135	180	77	49.5	43/53	3		270kg

**53/290/SS** Hanger body of high-performance nylon. All other components in grade 304(A2) stainless steel.

**53/301/SS** Complete in grade 304(A2) stainless steel.

\* Maximum door capacity means the maximum weight of each door carried by two hangers.

Track type	Hanger	Dimensions mm					Max. door capacity*
		A	B	C	D	Ø	
290	<b>56/290/SS</b>	87	40	30	37	M10	150kg
301	<b>56/301/SS</b>	135	78	43	49.5	M16	270kg

**56/290/SS** Hanger body of high-performance nylon. All other components in grade 304(A2) stainless steel.

**56/301/SS** Complete in grade 304(A2) stainless steel.

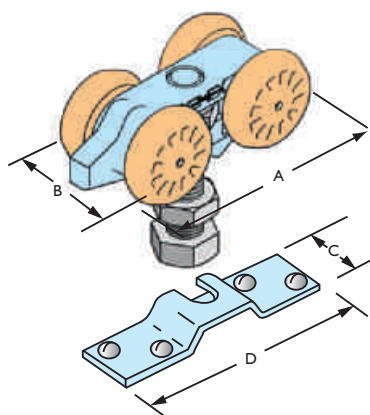
\* Maximum door capacity means the maximum weight of each door carried by two hangers.

Track type	Hanger	Dimensions mm					Max. door capacity*
		A	B	C	D	E	
290	<b>57/290/SS</b>	87	39	187	3	37	150kg
301	<b>57/301/SS</b>	135	39	187	3	49.5	270kg

**57/290/SS** Hanger body of high-performance nylon. All other components in grade 304(A2) stainless steel.

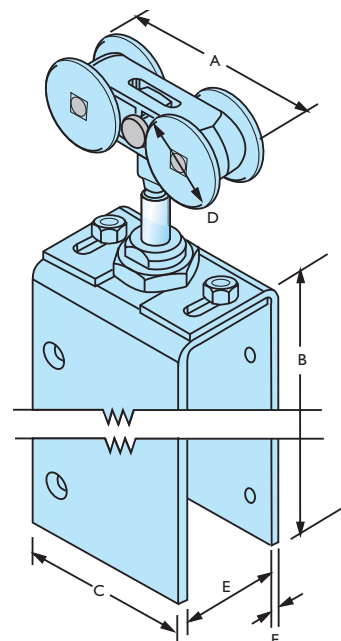
**57/301/SS** Complete in grade 304(A2) stainless steel.

\* Maximum door capacity means the maximum weight of each door carried by two hangers.

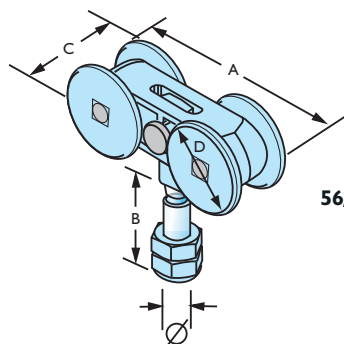


**284N/SS** for wood doors - 50kg  
**285N/SS** for metal doors - 50kg  
**284/SS** for wood doors - 100kg  
**285/SS** for metal doors - 100kg

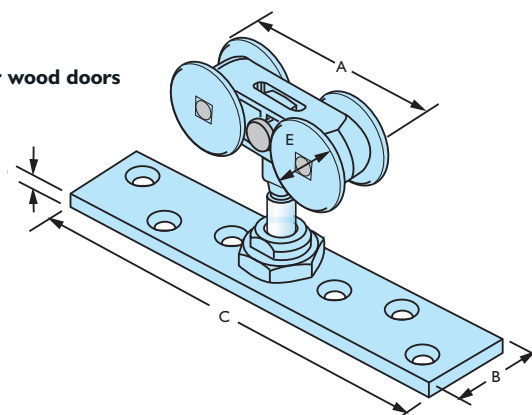
**53/SS** for wood doors



**56/SS** for metal doors



**57/SS** for wood doors



# 280/SS

## STAINLESS STEEL HARDWARE FOR TOP-HUNG WOOD OR METAL STRAIGHT SLIDING DOORS

### CAPACITY

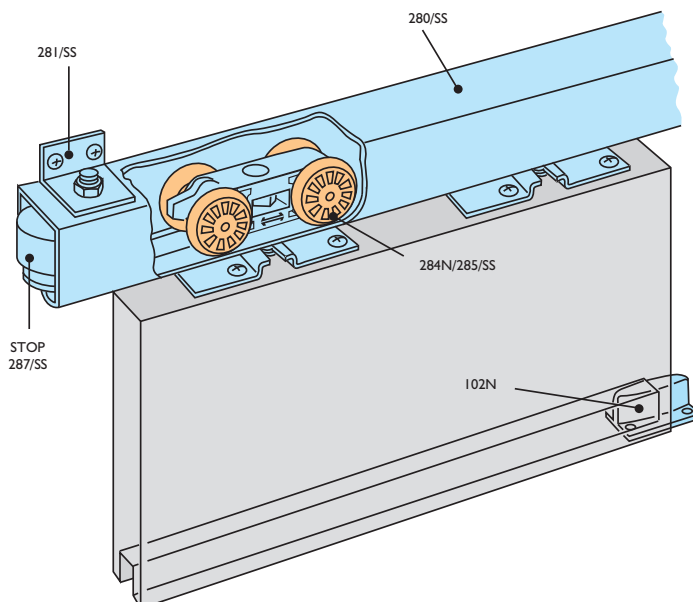
Max. door weight:	50kg or 100kg
Max. door height:	2400mm
Door thickness:	20-50mm

### APPLICATIONS

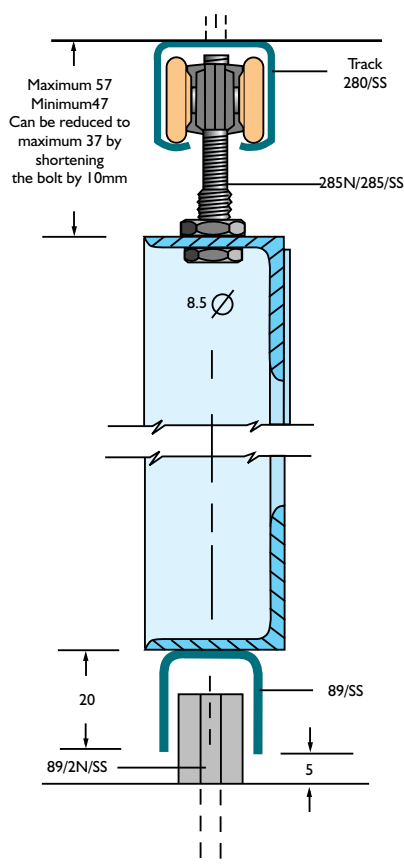
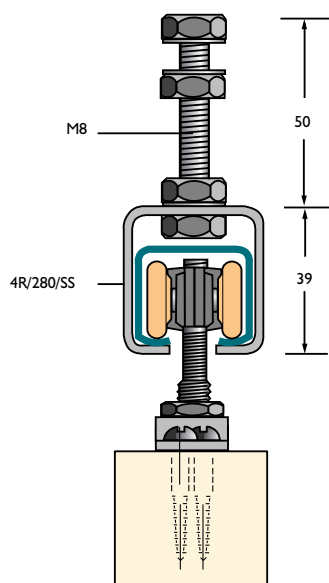
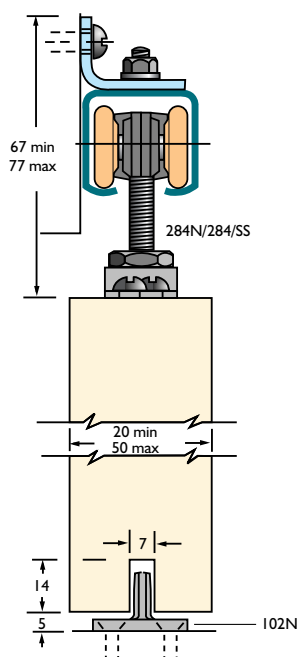
For sliding doors or gates in abattoirs, oil rigs, boats, chemical plants.

### TECHNICAL INFORMATION

280/SS Track:	Grade 316L(A4) stainless steel provided with 5mm punched holes for direct soffit fixing.
Hangers:	284N/SS and 285N/SS nylon body, nylon wheels, non bearing, for door weight of up to 50kg. 284/SS and 285/SS nylon body, nylon wheels, stainless steel bearings and axles, for door weight of up to 100kg. Fixing plates, bolts and nuts in grade 304(A2) stainless steel.
Guide:	102N Nylon guide
Guide:	89/2N/SS Nylon guide used in conjunction with stainless steel channel 89/SS.
Guide channel:	89/SS Grade 316L(A4) stainless steel.
Face bracket:	281/SS face fixed in grade 316L(A4) stainless steel.
Face bracket:	4R/280/SS soffit fixed in grade 316L(A4) stainless steel.
Stop:	287/SS rubber stop with stainless steel plate and bolt.

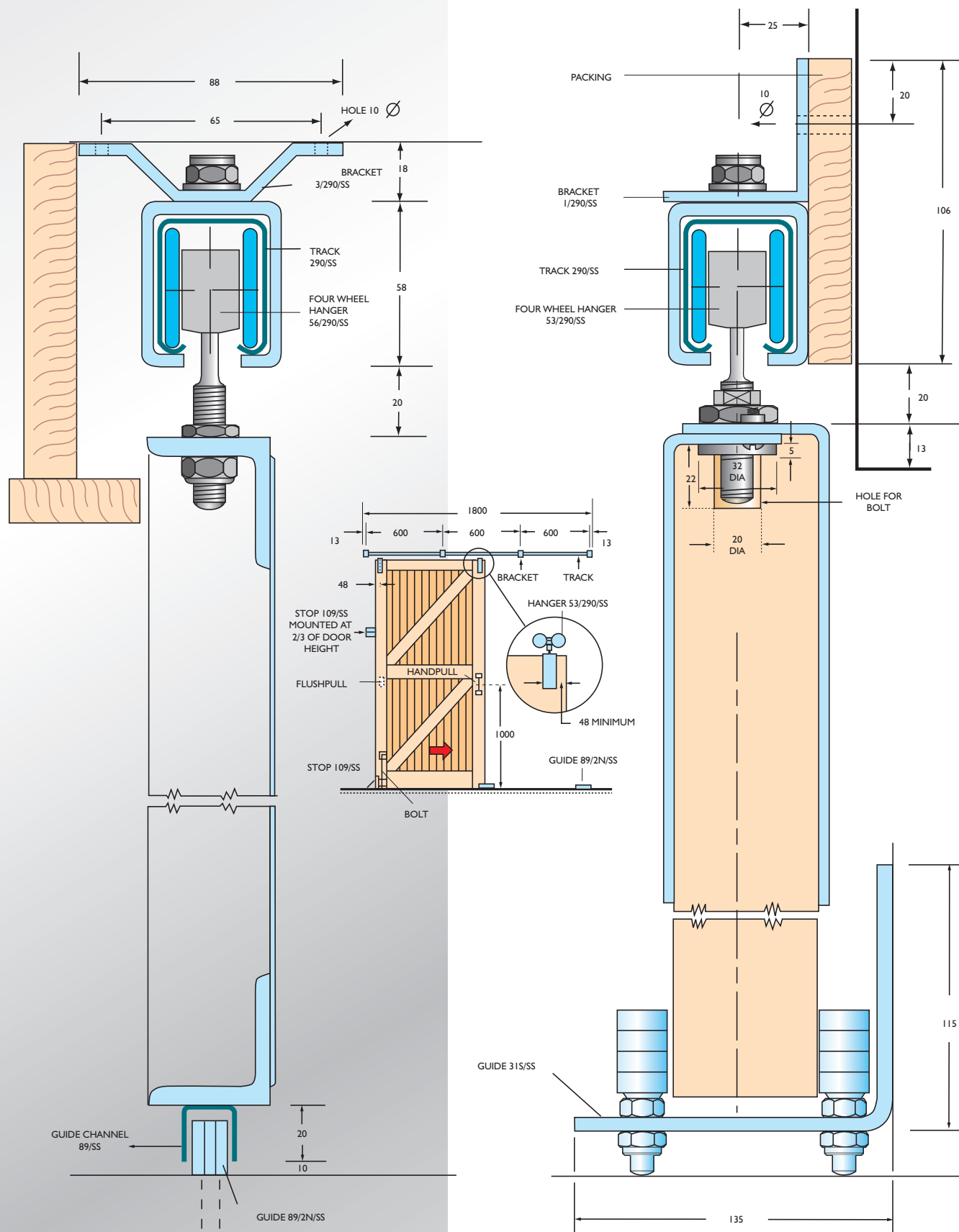


\* Track, brackets and hangers in stainless steel cannot be used with the standard Henderson non-stainless 280 range.



# 290/SS

## STAINLESS STEEL HARDWARE FOR STRAIGHT SLIDING DOORS





# 290/SS

## STAINLESS STEEL HARDWARE FOR TOP-HUNG WOOD OR METAL STRAIGHT SLIDING DOORS

### CAPACITY

Max. door weight:	150kg
Max. door height:	3000mm
Door thickness:	35-48mm

### APPLICATIONS

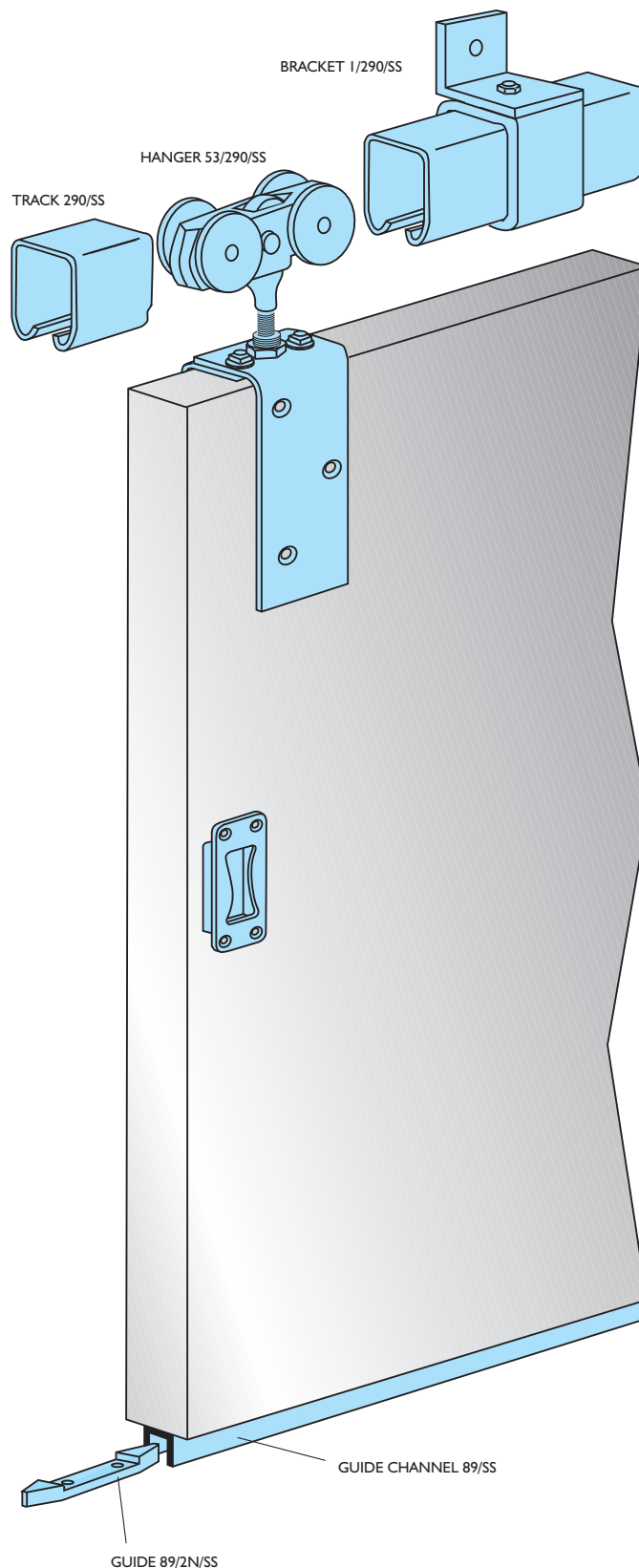
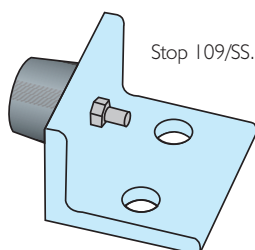
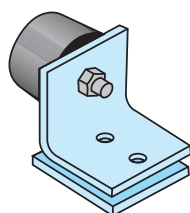
For lightweight doors in abattoirs, boats, oil rigs, food industry, chemical plants etc.

### DOOR TYPES

Timber doors, either solid or glazed, for industrial use require a strong, solid frame. Metal doors can be of angle or box section.

### TECHNICAL INFORMATION

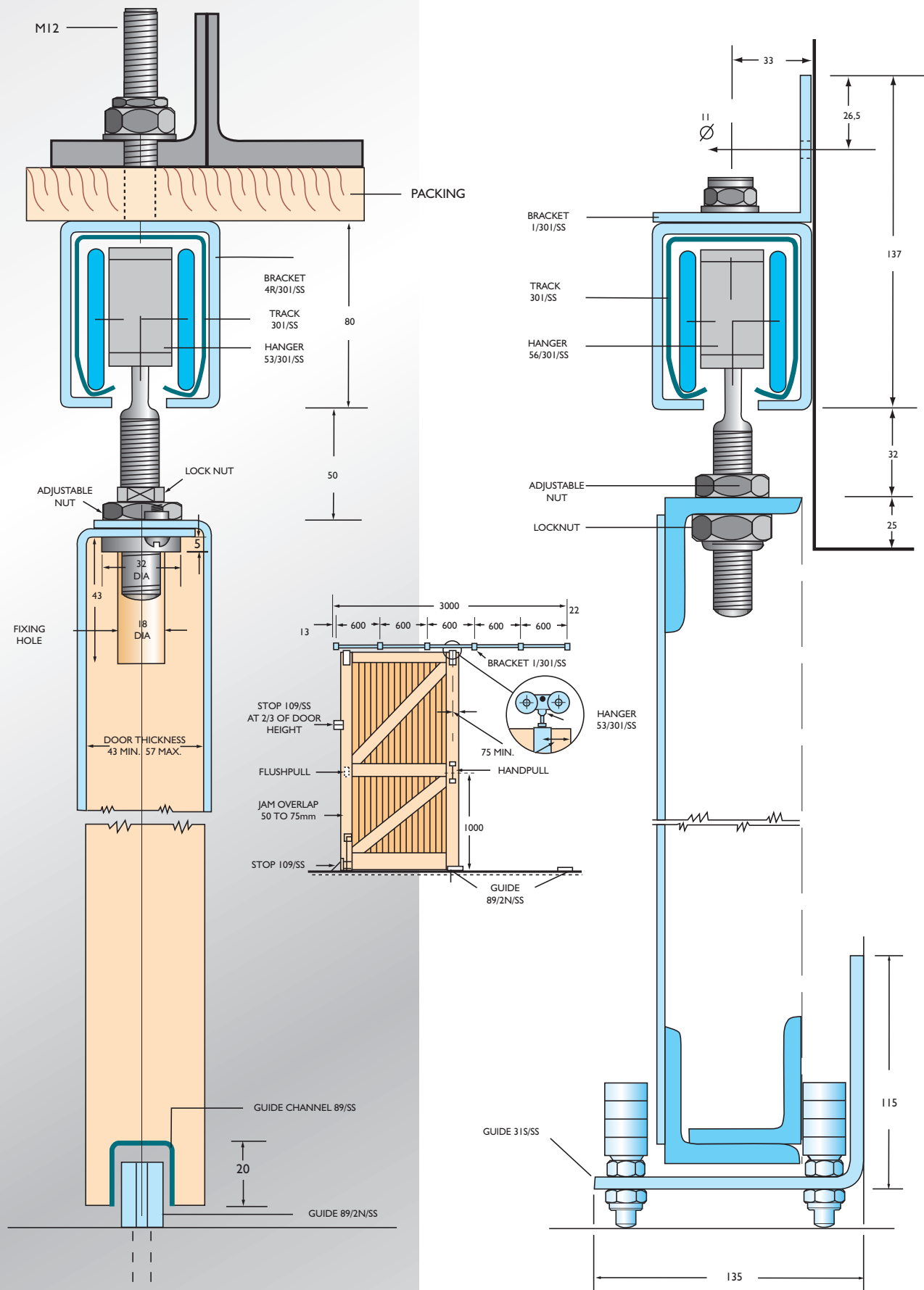
Track:	290/SS made from 1.5mm thick grade 316L (A4) stainless steel, available in 2000mm and 3000mm lengths.
Brackets:	1/290/SS in grade 316L (A4) stainless steel for face-fixing or 3/290/SS for soffit mounting. The centre-to-centre distance of the brackets can vary depending on track length. Recommended spacing is 600mm and in case of maximum load 500mm.
Hangers and guides:	Hangers 53/290/SS, 57/290/SS and guides 89/2N/SS and 31S/SS are for timber doors. Hangers 56/290/SS with guides 89/2N/SS and 31S/SS are for metal doors. Standard hangers are supplied with a nylon body and grade 304 (A2) stainless steel wheels.
Accessories:	Trackstop HH3/290/SS.



\* Track, brackets and hangers in stainless steel cannot be used with the standard Henderson non-stainless 290 range.

# 301/SS

## STAINLESS STEEL HARDWARE FOR STRAIGHT SLIDING DOORS



# 301/SS

## STAINLESS STEEL HARDWARE FOR TOP-HUNG WOOD OR METAL STRAIGHT SLIDING DOORS

### CAPACITY

Max. door weight: 270kg  
Max. door height: 3600mm  
Door thickness: 43-57mm

### APPLICATIONS

For heavy doors or gates in abattoirs, boats, oil rigs etc. Most straight sliding doors can be accommodated.

### DOOR TYPES

Timber doors, either solid or glazed, for industrial use require a strong, solid frame. Metal doors can be of angle or box section.

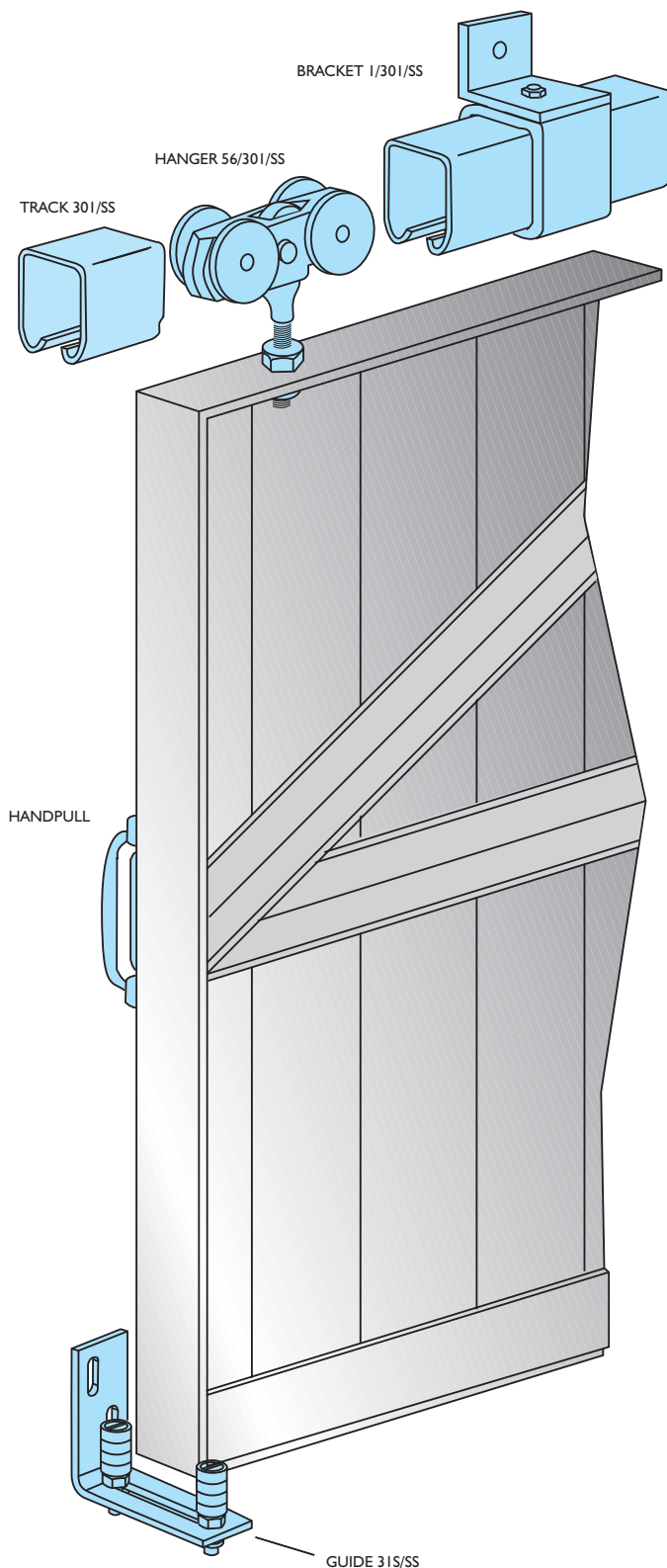
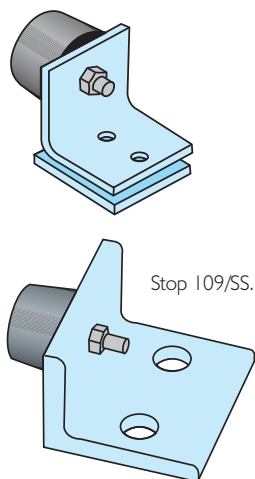
### TECHNICAL INFORMATION

**Track:** 301/SS made from 2.5mm thick grade 316L (A4) stainless steel, available in 2000mm and 3000mm lengths.

**Brackets:** 1/301/SS in grade 316L (A4) stainless steel is the most popular for face-fixing. The centre-to-centre distance of the brackets can vary depending on track length. Recommended spacing is 600mm and in case of maximum load 500mm.

**Hangers and guides:** Hangers 53/301/SS, 57/301/SS and guides 89/2N/SS and 31S/SS are for industrial timber doors. Hangers 56/301/SS with guides 89/2N/SS and 31S/SS are for metal doors. Hangers are supplied with a stainless steel body, wheels and bearings.

**Accessories:** Trackstop HH3/301/SS.



\* Track, brackets and hangers in stainless steel cannot be used with the standard Henderson non-stainless 301/301H range.

# HENDERSON

## **P C Henderson Limited**

Durham Road, Bowburn, County Durham DH6 5NG, UK

Website: [www.pchenderson.com](http://www.pchenderson.com)

## **Technical Sales Team**

Tel: 0191 377 7345 Fax: 0191 377 3116

e-mail: [sales@pchenderson.com](mailto:sales@pchenderson.com)

## **Export Department**

Tel: +44(0)191 377 7346 Fax: +44(0)191 377 0755

e-mail: [international@pchenderson.com](mailto:international@pchenderson.com)

## **Henderson Nederland BV**

Postbus 258, 5530 AG Bladel, Holland

Tel: +31 (0) 497 33 2020 Fax: +31 (0) 497 33 2029

e-mail: [sales@henderson.nl](mailto:sales@henderson.nl)

## **P C Henderson (Ireland) Limited**

Westlink Industrial Estate, Kylemore Road, Dublin 10 Ireland

Tel: +353 (0)1 643 6816 Fax: +353 (0)1 626 0455

e-mail: [sales@pchenderson.ie](mailto:sales@pchenderson.ie)



Certificate Number 10845  
ISO 9001, ISO 14001



**P C Henderson Limited**  
[www.pchenderson.com](http://www.pchenderson.com)