



# *Product Catalogue*



[www.australianlock.com.au](http://www.australianlock.com.au)



# Contents

**Series Six - Six Pin Inline**

Contents	3
Mark 2 Features	4
Series Plugs	5 - 7
Sub Assembly	7
Deadlock	8
Series Shells	8
Keys	9
Miscellaneous	9
Series Six Warranty	10

# Series Six Mark 2



Series Six Mark2 is Australian Lock Company's range of 6 pin in-line barrels & keys designed for those seeking a solution to their medium security master key system requirements.

The extensive product range of economical cylinders & ergonomically designed coloured key heads allows the agent network of Australian Lock Company to supply low priced master key systems that can be easily differentiated either door to door or at each level within the master key system.

Australian Lock Company manufactures Series Six Mark2 barrels & keys at their Unanderra manufacturing facility to ensure product integrity. The very latest key milling technology has been designed & purpose built to ensure the customer can be guaranteed a high quality product.

## The main features of Series Six Mark2 are:

- Locally manufactured, distributed & supported by the privately owned & operated Australian Lock Company.
- Series Six Mark2 comes with an indisputably strong 3mm thick, nickel silver key blank.
- The ergonomically shaped key head comes in 8 colours. The 3 panel design allows for 343 possible colour combinations.
- The key affords ample space for the locksmith to identify coded keys & contact details.
- Numerous Series Six Mark2 profiles are available for locksmiths to ensure secure restricted systems are available for selected customers.
- Series Six Mark2 offers over 30 different cylinder & plug types to retrofit most applications.

- Series Six Mark2 is an economical option for those seeking a restricted master key system.
- Customer security is assured, with replacement keys only available through authorised Series Six Mark2 agents.

## The Colour Key System

SS Mark2 offers three panel keyheads which can be mixed and matched, eight colours to choose from black, reflex blue, green, orange, blue, red, silver and yellow.

Typical uses include: Internal Doors, Entry Doors, Common Architectural Door Hardware, perimeter gates, Limited Access Areas, Offices and Households.

*Colour coding for the key head is perhaps best demonstrated in the colour chart below.*



**Red** – 6KH4000RED



**Blue** – 6KH4000BLUE



**Black** – 6KH4000BLK



**Green** – 6KH4000GRN



**Silver** – 6KH4000SVER



**Yellow** – 6KH4000YELL



**Reflex Blue** – 6KH4000R/BL



**Orange** – 6KH4000ORAN

## Series Six Plugs



Lockwood 001 Inner 6\*\*PL001-SCP  
(Five pin version)

**SCP NB**



255 Deadbolt Inner Plug 6\*\*PL255-SCP  
(Six pin version)

**SCP**



Lanes Apollo Plug 6\*\*PL510-SCP  
(Six pin version)

**SCP**



201 Rim Nightlatch Plug 6\*\*PL201-SCP  
(Six pin version)

**SCP NB**



Whitco Saturn Plug 6\*\*PL373-SCP  
(Six pin version)

**SCP**



530 Key in Knob Plug 6\*\*PL530-SCP  
(Six pin version)

**SCP NB**



234 Padlock Plug 6\*\*PL234  
(Six pin version)

**NB**



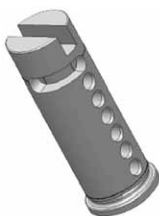
Deadbolt 6\*\*PL460-SCP  
(Six pin version)

**SCP**



Oval Mortice Cylinder Plug  
6\*\*PL570-SCP - 34mm  
6\*\*PL57037-SCP - 37mm  
6\*\*PL57048-SCP - 48mm  
6\*\*PL57060-SCP - 60mm  
6\*\*PL57076-SCP - 76mm  
6\*\*PL57084-SCP - 84mm  
(Six pin version)

**SCP NB**



245 Padlock Plug 6\*\*PL245  
(Six pin version)

**NB**



Deadbolt Plug 6\*\*PL461-SCP  
(Six pin version)

**SCP**

# Series Six - Six Pin Inline

## Series Six Plugs *continued*



Lanes Apollo Plug 6\*\*PL510-SCP  
(Six pin version)

SCP



PD key in knob Plug 6\*\*PL8221-SCP  
(Six pin version)

SCP



Efco 850J Plug 6\*\*PL850J-SCP  
(Six pin version)

SCP



680 Patio Bolt Plug 6\*\*PL680-SCP  
(Five pin version)

SCP



Whitco Double Floating Euro Plug 6\*\*PL8412-CP  
(Five pin version)

CP



8555-1 Fixed Cam Plug 6\*\*PL8551-CP - Old Version  
(Six pin version)

CP



Whitco Plug 6\*\*PL7103-SCP  
(Three pin version)

SCP



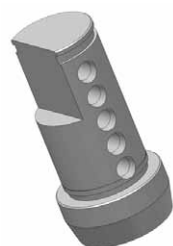
Adam Rite Kawneer Plug 6\*\*PL8466-SCP  
(Six pin version)

SCP



Thumb Turn Euro Blank Plug 6\*\*PL8552-CP - Old Version  
(Six pin version)

CP



Whitco Plug 6\*\*PL7105-SCP  
(Five pin version)

SCP



8474 Garage Door Plug 6\*\*PL8474-CP  
(Six pin version)

CP



8555-3 Floating Cam Plug 6\*\*PL8553-CP - Old Version  
(Six pin version)

CP

## Series Six Plugs *continued*



9555-1 Fixed Cam Plug 6\*\*PL9551-CP - New Version

(Six pin version)

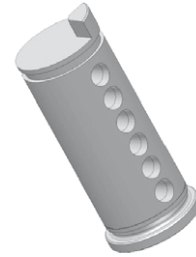
CP



9555-2 Thumbturn Euro Blank Plug 6\*\*PL9552-CP  
- New Version

(Six pin version)

CP

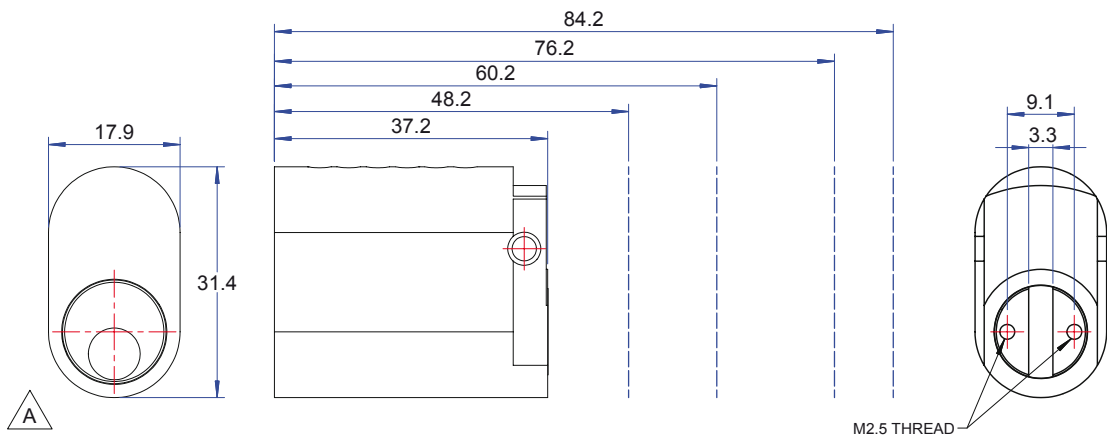


9555-3 Floating Cam Plug 6\*\*PL9553-CP

(Six pin version)

CP

## Series Six Sub Assembly



Series Six Sub Assembly 570-37cm

6\*\*SA57037-PBU

6\*\*SA57037-SCP

(Six pin version)

Series Six Sub Assembly 570-60cm

6\*\*SA57060-PBU

6\*\*SA57060-SCP

(Six pin version)

Series Six Sub Assembly 570-84cm

6\*\*SA57084-PBU

6\*\*SA57084-SCP

(Six pin version)

Series Six Sub Assembly 570-48cm

6\*\*SA57048-PBU

6\*\*SA57048-SCP

(Six pin version)

Series Six Sub Assembly 570-76cm

6\*\*SA57076-PBU

6\*\*SA57076-SCP

(Six pin version)

# Series Six - Six Pin Inline

## Deadlock



Sub Assembly Single Deadlock  
APDB4261-SSS  
*(Six pin C4 version)*

---

Sub Assembly Double Deadlock  
APDB4262-SSS  
*(Six pin C4 version)*

---



Sub Assembly Single Deadlock  
APDB4261-PBU  
*(Six pin C4 version)*

---

Sub Assembly Double Deadlock  
APDB4262-PBU  
*(Six pin C4 version)*

---



Sub Assembly Single Deadlock  
APDB4261-FB  
*(Six pin C4 version)*

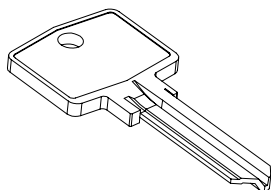
---

Sub Assembly Double Deadlock  
APDB4262-FB  
*(Six pin C4 version)*

---



## Keys



Series Six MK1  
Coined Key Blanks  
6\*\*KB1000  
*(with customer details)*



Keyheads - 3 Piece  
6KH4000\*\*\*  
*available in Black, Blue, Green, Orange, Reflex Blue, Red, Silver and Yellow*



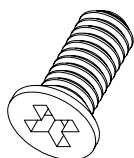
C4 Key Blanks Nickel Silver  
6KBC4\*\*\*  
*(with customer details)*

C4 Key Blanks Nickel Silver  
APC4KB\*\*\*  
*(with ALCOM details)*



Series Six MK1  
Coined Key Blanks  
6\*\*KB4000\*\*\*  
*(New style with customer details)*

## Miscellaneous



Cam Screws  
SC2205  
*(Metric cam screws to suit mortice cylinder plugs)*

PD Key in Knob Parts Pack - 8221  
6PP8221

SA Shackle  
APSK234/45SA

SAA Shackle  
APSK234/45SAA

# Product Warranty

## Series Six Mark 2 Medium Security Master Key System

Australian Lock Company guarantees its range of Series Six Mark2 Medium Security Cylinders & Keys against defects in workmanship & materials. Should the product be found to be defective within its normal working life, Australian Lock Company will repair or replace the product with the same or equivalent product free of charge upon receipt of proof of purchase.

Under this product warranty Australian Lock Company assumes no responsibility for the following:

1. Failure to adhere to fitting instructions or faulty installation.
2. Product wear and tear due to improper maintenance.
3. Product failure caused by the use of non Series Six parts.
4. Unauthorised modifications or repairs made to the product.
5. Use of unauthorised replacement parts.
6. Any costs incurred due to –
  - i) Removal & or replacement of the Series Six product.
  - ii) Freight & / or travelling time.
  - iii) Any modifications or repairs to the Series Six product unless authorised by Australian Lock Company.
7. Personal injury, property damage or economic loss however caused.
8. Damage caused by corrosion when the Series Six product is installed in a corrosive environment.

Nothing in this Australian Lock Company product warranty excludes restricts or modifies in any condition, warranty, right or liability implied or protected by law where to do so would render the guarantee or any part of it void.



Whilst the Australian Lock Company Pty Ltd has taken every effort to ensure that the information in this catalogue is accurate at the time of publication, we recommend that you consult your Sales Representative to ascertain information in specific products and specifications prior to placing your order. Please note that we reserve the right to make changes without notice. The Australian Lock Company Pty Ltd will not be liable for any damage or loss arising from any errors or omissions in the information contained in this catalogue or arising from the use of the information contained herein.

### **Australian Lock Company Pty Limited**

ABN 17 002 420 840

#### **AUSTRALIA**

17 Doyle Avenue, Unanderra NSW 2526 Australia

PO Box 479 Unanderra NSW 2526 Australia

**Ph** +61 (0)2 4272 4922 • **Fax** +61 (0)2 4272 4677

**Email** sales@australianlock.com.au

**Web** www.australianlock.com.au

#### **NEW ZEALAND**

PO Box 47169, Trentham, Upper Hutt, New Zealand

**Ph** +64 272 875 625 • **Fax** +64 4970 2355

**Email** peterh@australianlock.co.nz

**Web** www.australianlock.co.nz







**Australian Lock Company Pty Limited**

ABN 17 002 420 840

**AUSTRALIA**

17 Doyle Avenue, Unanderra NSW 2526 Australia

PO Box 479 Unanderra NSW 2526 Australia

**Ph** +61 (0)2 4272 4922 • **Fax** +61 (0)2 4272 4677

**Email** [sales@australianlock.com.au](mailto:sales@australianlock.com.au)

**Web** [www.australianlock.com.au](http://www.australianlock.com.au)

**NEW ZEALAND**

PO Box 47169, Trentham, Upper Hutt, New Zealand

**Ph** +64 272 875 625 • **Fax** +64 4970 2355

**Email** [peterh@australianlock.co.nz](mailto:peterh@australianlock.co.nz)

**Web** [www.australianlock.co.nz](http://www.australianlock.co.nz)

