



Securefold & Securefold Ultra

The ultimate folding door hardware system

Design in motion

August 2013

HENDERSON





Window on the world

Henderson Securefold offers the very best in exterior folding door hardware systems to help you securely open up your home to the outside world.

When it comes to the design and manufacture of folding door hardware systems, we are a global leader. For over 90 years, we have been creating the highest quality products backed by the same high standards of service. That is why the Henderson name is now synonymous with UK design and manufacturing expertise.

Securefold has been designed and tested to over 100,000 cycles by our in-house experts to enable you to open up your exterior walls with confidence and enjoy a true indoor/outdoor experience in your living space. The system operates with effortless ease and combines all the aesthetic benefits of folding timber or aluminium doors with the additional advantages of uncompromising security, weather resistance and durability of stainless steel.

The company is committed to quality and is registered to BS EN ISO 9001: 2000 Quality Systems and Environmental Management Systems ISO 14001: 1996.

As part of this commitment this brochure has been printed on carbon neutral paper in line with the FSC which promotes responsible management of the world's forests. This accreditation guarantees that only the amount of wood which the forest can regenerate naturally is cut down with minimal impact on the environment, wildlife and the indigenous people who reside there.





SECUREFOLD BENEFITS

Securefold and Securefold Ultra offer a wide range of essential benefits, which makes it one of the safest and most convenient folding door solutions on the market.

It looks great - suitable for both timber and aluminium doors, a choice of brushed satin, polished stainless steel, titanium gold and black finishes mean it can complement existing hardware and virtually any colour scheme.

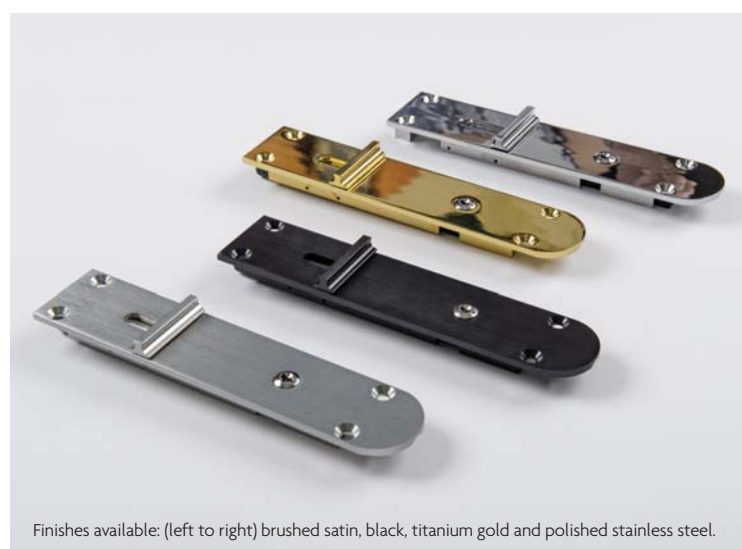
It's durable - with most working parts made from 316 stainless steel, anodised aluminium track and polymers and tested to over 100,000 cycles, it offers an unprecedented working life, even in coastal areas.

It's easy to install - comprehensive instructions are supplied with every pack and our Technical Services Department can help with any query. We can also supply a hinge fitting jig upon request.

It's weather resistant - the system comes in a range of modern and contemporary finishes that provide a high degree of weather and corrosion resistance. The table below highlights the systems test results.

	Air-tightness in PA	Water-tightness in PA	Resistance wind force in PA
Test Results	650	600	+3000/-2550
Norm Classification	EN 12207	EN 12208	EN 12210
Class Achieved	4	94A	4

It's guaranteed - with high quality components and a unique design this system is guaranteed for 10 years.



SECUREFOLD FEATURES AND SYSTEM SPECIFICATION

- High security locking system
- Systems available for timber or aluminium doors
- Suitable for doors weighing up to 45kg and 100kg
- Outstanding weather resistance
- Maximum corrosion resistance
- Inward and outward opening options with a range of opening variations
- Concealed channel to enhance appearance
- Precision bearings top and bottom to allow effortless movement
- Tested to over 100,000 cycles
- Option for surface mounted or morticed hinges (for our range of hinges, please refer to page 15)
- Easy installation

As with all Henderson products, the Securefold range has been designed for maximum performance and ease of installation.

Comprehensive instructions are supplied with every pack and our Technical Services Department have over 80 years combined experience and are on hand to deal with any specification or installation queries.

Whilst Securefold has been built using precision engineering, additional built-in vertical and lateral adjustment mechanisms have been developed to ensure the highest possible finish.





SECUREFOLD SPECIFICATIONS

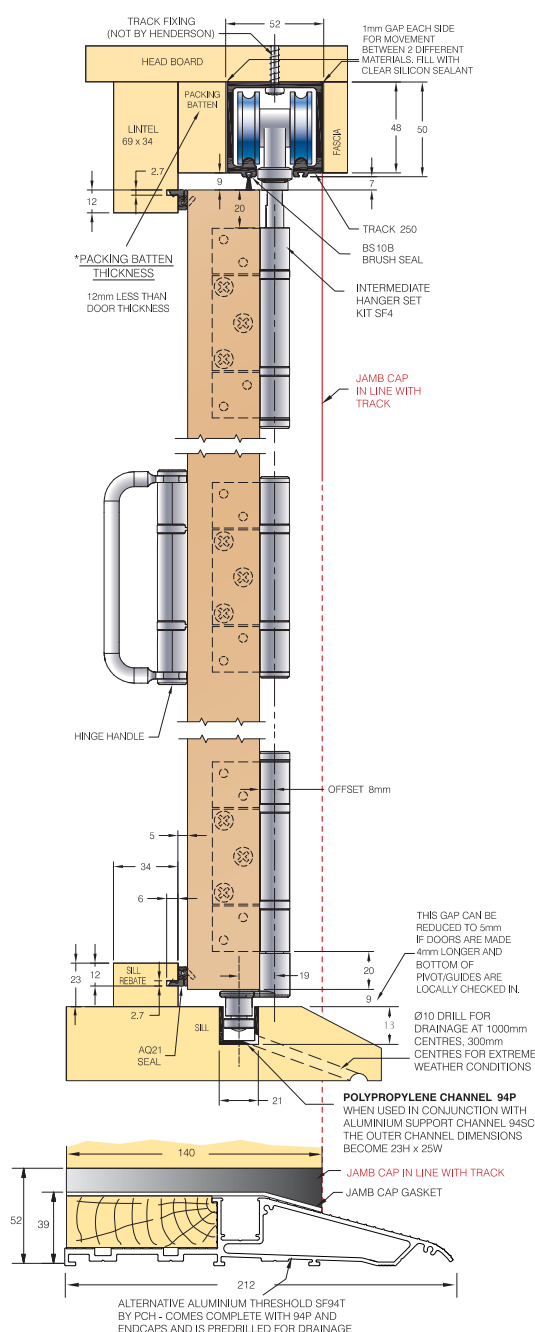
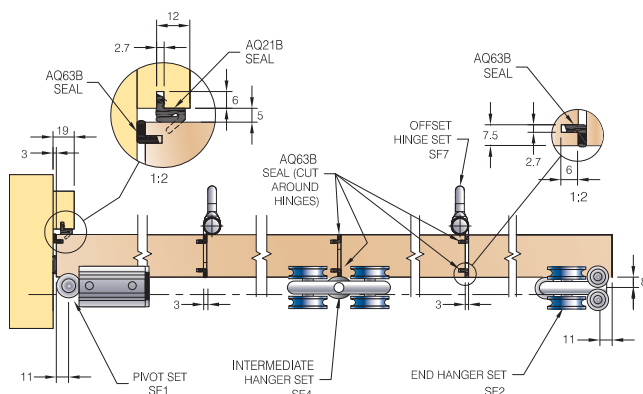
	45kg	100kg
Maximum Leaf Height	3300mm	3300mm
Maximum Leaf Weight	45kg	100kg
Maximum Leaf Width	1000mm	1000mm
Leaf Thickness	35-68mm	36-68mm*

SECUREFOLD ALUMINIUM

	45kg	100kg
Maximum Leaf Height	3000mm	3000mm
Maximum Leaf Weight	45kg	100kg
Maximum Leaf Width	1000mm	1000mm
Maximum Leaf Thickness	35-68mm	35-68mm*

Securefold Aluminium has been designed for residential and commercial aluminium exterior folding door applications. Two systems are available for doors up to 45kg and 100kg. Both systems are made from stainless steel 316 so they will not corrode and are ideal for coastal installations where the hardware can be more exposed to the elements and salt water.

* For thick and/or narrow width doors please consult the fitting instructions regarding 'camming'. For doors between 35-47mm use an alternative flushbolt. Contact our Technical Customer Services Team for further information.



SECUREFOLD ULTRA FEATURES AND SYSTEM SPECIFICATION

Securefold Ultra is the latest development from P C Henderson for outward opening exterior folding timber doors. The system has been expertly designed to provide an additional level of security, incorporating a number of enhanced components, to make it the most secure system on the market.

- Three points of locking on every external door seam.
Robust hardware is provided at three points on the door to prevent entry.
- A unique interlocking anti-tamper hinge, which makes it difficult to force out of position or dismantle.
- Multipoint lock with anti-snap and anti-bump cylinder to withstand attack from even the most determined would-be intruder.
- Tested to PAS 24, BS EN 1627 RC2 and Secured by Design security standards and therefore is approved as Secured by Design Hardware.
- Securefold Ultra was tested and is approved by Secured by Design using Yale's YS170 multipoint lock, which incorporates handle driven top, bottom and centre hooks.
- Keyfree options are also available to add extra security and the 'wow' factor to your project.

SECUREFOLD ULTRA SPECIFICATIONS

	100kg
Maximum Leaf Height	3300mm
Maximum Leaf Weight	100kg
Maximum Leaf Width	1000mm
Leaf Thickness	48-68mm*

* For thick and/or narrow width doors please consult the fitting instructions regarding 'camming'. For doors between 35-47mm use an alternative flushbolt. Contact our Technical Customer Services Team for further information.



ENHANCED SECURITY STANDARDS

Securefold Ultra has enhanced security components that are certified to PAS 24 and BS EN 1627 RC2. These are the main European wide and UK specific performance test standards for burglar resistance on folding door systems. It is also accredited as Secured by Design hardware under a new UK wide police initiative. This accreditation could possibly lower your home insurance premiums.

Securefold Ultra is the only folding door system on the market that holds all three of these certifications and accreditations.

- Secured by Design (SBD) is the official UK Police flagship initiative supporting the principles of 'designing out crime'. Owned by the Association of Chief Police Officers (ACPO), SBD focuses on crime prevention of homes and commercial premises and promotes the use of security standards for a wide range of applications and products. The principles have been proven to achieve a reduction of crime risk of up to 75%.
- The UK specific PAS 24 and the European wide BS EN 1627 both seek to confirm that a folding door system offers an enhanced security performance to withstanding human attack or mechanical loads. These two certifications ensure that the system can offer enhanced security protection and has been tested accordingly to support this claim.

When sourcing burglar resistant exterior folding door components for enhanced security, a key point is to always look for these certifications and accreditations.



SECUREFOLD ULTRA HARDWARE



Anti-tamper security screw

Hinge bolt reinforcing plate

Integrated bridge plate with security screw to prevent removal of the strapbolt

3mm reinforcing plate

KEY FEATURE

UNIQUE INTERLOCKING, ATTACK RESISTANT HINGES. These are an integral part of the system, making it difficult for intruders to attack, disengage or tamper with any part of the system. The interlocking design also stops the hinge being dismantled or forced out of position.

Security hinge pin

Security hinge pin

3mm reinforcing plate

Anti-tamper security screw

KEY FEATURE

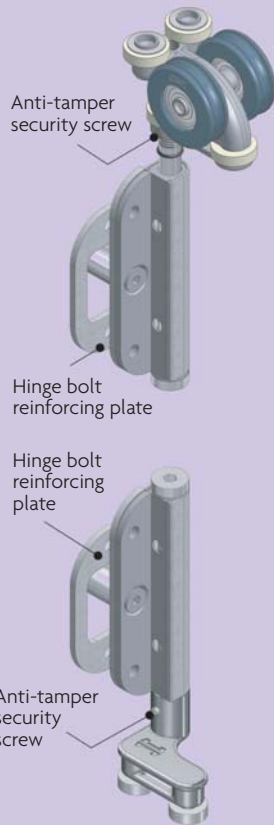
HINGE BOLT REINFORCING PLATE. There are three points of locking on every door seam, creating a secure seal between the doors.

KEY FEATURE

ENHANCED ANTI-TAMPER SECURITY SCREWS. These prevent tampering of the hardware or disengagement from the door when closed.

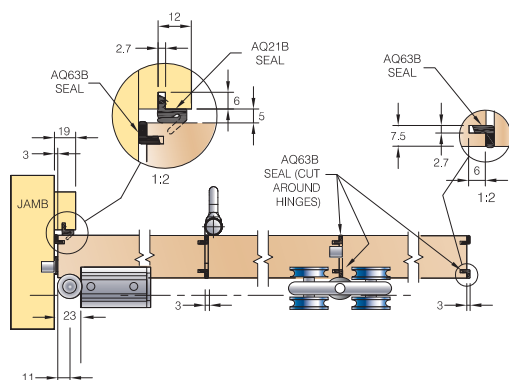
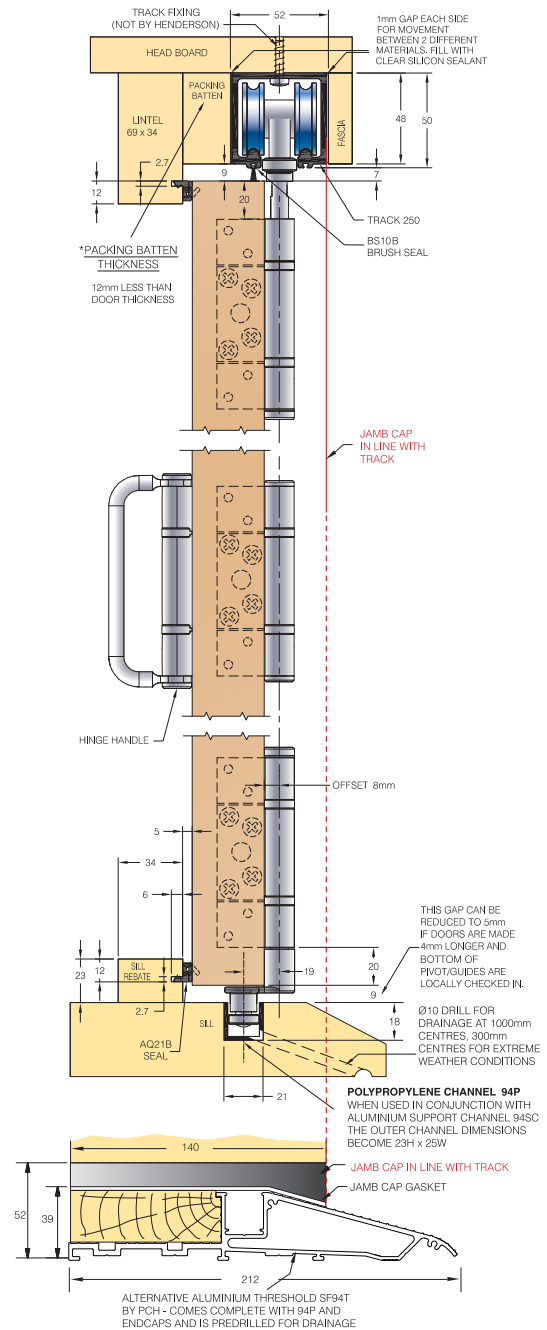
KEY FEATURE

10mm Ø HINGE BOLT. Lockable flushbolt manufactured from extruded aluminium incorporating a 10mm diameter 316 stainless steel bolt capable of withstanding pressures from both sides of the door.



SFU2 END HANGER SET

Additional hardware to be used when an even number of doors are folding to one side.



COMMON PANEL LAYOUTS FOR SECUREFOLD & SECUREFOLD ULTRA**

Door configuration

SF1 pivot assembly set
SF2R end hanger set (RH)
SF2L end hanger set (LH)
SF4 intermediate hanger set
SF5 hinge set inward opening
SF3 hinge set with handle
SF7 hinge set offset outward opening
SF8 rebated end hanger meeting
SF9 intermediate pivot hinge (optional)
SF10 face fix handle (optional)
YSI70 multipoint lock
SF flushbolt

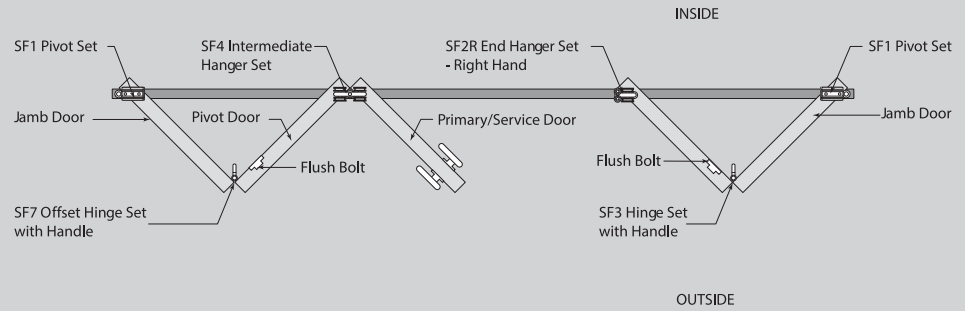
To add surface mounted hinges replace:

SF1 with SFW1
SF2 with SFW2
SF8 with SFW8
SF9 with SFW9
(only available for standard Securefold)
† All Securefold Ultra hardware kits come complete with certified hardware, multipoint lock-available in brushed satin, polished stainless steel, titanium gold and black finishes. Specify only track and seals required to complete the specification.

Outward opening configurations	Securefold hardware	Securefold Ultra hardware kits†
2 LEAF 	2 x SF flushbolt, 1 x SF1 pivot set, 1 x SF3 hinge set with handle, 1 x SF2L end hanger set - left hand.*	1 x SFU1, 1 x SFU9, 1 x SFU2
2+1 LEAF 	1 x YSI70, 2 x SF flushbolt, 2 x SF1 pivot set, 1 x SF3 hinge set with handle, 1 x SF2L end hanger set - left hand.*	2 x SFU1, 2 x SFU2, 2 x SFU9
3 LEAF 	1 x YSI70, 2 x SF flushbolt, 1 x SF1 pivot set, 1 x SF4 intermediate hanger set, 1 x SF7 offset hinge set with handle.	1 x SFU1, 1 x SFU9, 1 x SFU4
2+2 LEAF 	4 x SF flushbolt, 2 x SF1 pivot set, 2 x SF3 hinge set with handle, 1 x SF8 rebated end hanger meeting.	2 x SFU1, 2 x SFU9
3+1 LEAF 	1 x YSI70, 4 x SF flushbolt, 2 x SF1 pivot set, 1 x SF4 intermediate hanger set, 1 x SF7 offset hinge set with handle.	2 x SFU1, 2 x SFU9, 1 x SFU4
4 LEAF 	4 x SF flushbolt, 1 x SF1 pivot set, 1 x SF4 intermediate hanger set, 2 x SF7 offset hinge set with handle, 1 x SF2L end hanger set - left hand.*	1 x SFU1, 1 x SFU9, 1 x SFU4, 1 x SFU2
3+2 LEAF 	1 x YSI70, 4 x SF flushbolt, 2 x SF1 pivot set, 1 x SF3 hinge set with handle, 1 x SF4 intermediate hanger set 1 x SF7 offset hinge set with handle, 1 x SF2R end hanger set - right hand.*	2 x SFU1, 2 x SFU9, 1 x SFU4, 1 x SFU2
4+1 LEAF 	1 x YSI70, 4 x SF flushbolt, 2 x SF1 pivot set, 1 x SF4 intermediate hanger set, 2 x SF7 offset hinge set with handle, 1 x SF2L end hanger set - left hand.*	2 x SFU1, 2 x SFU9, 1 x SFU4, 1 x SFU2
5 LEAF 	1 x YSI70, 4 x SF flushbolt, 1 x SF1 pivot set, 1 x SF3 hinge set with handle, 2 x SF4 intermediate hanger set, 1 x SF7 offset hinge set with handle.	1 x SFU1, 1 x SFU9, 2 x SFU4
3+3 LEAF 	1 x YSI70, 6 x SF flushbolt, 2 x SF1 pivot set, 2 x SF4 intermediate hanger set, 2 x SF7 offset hinge set with handle.	2 x SFU1, 2 x SFU9, 2 x SFU4
4+2 LEAF 	6 x SF flushbolt, 2 x SF1 pivot set, 1 x SF3 hinge set with handle, 1 x SF4 intermediate hanger set, 2 x SF7 offset hinge set with handle, 1 x SF8 rebated end hanger meeting.	2 x SFU1, 2 x SFU9, 1 x SFU4
5+1 LEAF 	1 x YSI70, 6 x SF flushbolt, 2 x SF1 pivot set, 1 x SF3 hinge set with handle, 2 x SF4 intermediate hanger set, 1 x SF7 offset hinge set with handle.	2 x SFU1, 2 x SFU9, 2 x SFU4
6 LEAF 	6 x SF flushbolt, 1 x SF1 pivot set, 1 x SF3 hinge set with handle, 2 x SF4 intermediate hanger set, 2 x SF7 offset hinge set with handle, 1 x SF2L end hanger set - left hand.*	1 x SFU1, 1 x SFU9, 2 x SFU4, 1 x SFU2

The configurations shown above are viewed from the outside. They can be reversed, if reversed the parts marked * will have to be the opposite handing e.g. "SF2R/SF2R end hanger set - right hand" will become "SF2L/SF2L end hanger set - left hand" and "SF2L/SF2L end hanger set - left hand" will become "SF2R/SF2R end hanger set - right hand". SFW9 intermediate pivot is optional for doors exceeding 2200mm in height. The SFW8 (rebated end hanger meeting) is illustrated in the split position on each door. Only one kit is required per door meeting point. ** Ultra only available outward opening. On systems using door leaves that are narrow and wide and the hypotenuse is more than the door width x 1.004 then a risk of camming exists (see fitting instructions for further information). Please contact our Technical Customer Services Team for further information.

Hardware application

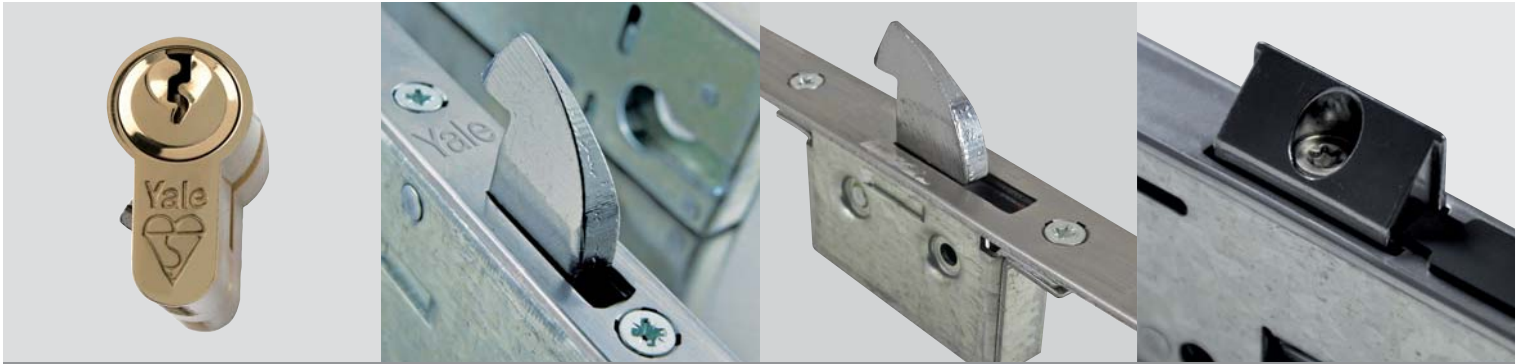


Inward opening configurations for standard Securefold only

Securefold hardware

2 LEAF		2 x SF flushbolt, 1 x SF1 pivot set, 1 x SF5 hinge set inward opening, 1 x SF2R end hanger set - right hand.*
2+1 LEAF		1 x YS170, 2 x SF flushbolt, 2 x SF1 pivot set, 1 x SF5 hinge set inward opening, 1 x SF2R end hanger set - right hand*
3 LEAF		1 x YS170, 2 x SF flushbolt, 1 x SF1 pivot set, 1 x SF6 offset hinge set inward opening, 1 x SF4 intermediate hanger set.
2+2 LEAF		4 x SF flushbolt, 2 x SF1 pivot set, 2 x SF5 hinge set inward opening, 1 x SF8 rebated end hanger meeting.
3+1 LEAF		1 x YS170, 4 x SF flushbolt, 2 x SF1 pivot set, 1 x SF6 offset hinge set inward opening, 1 x SF4 intermediate hanger set.
4 LEAF		1 x YS170, 4 x SF flushbolt, 1 x SF1 pivot set, 2 x SF6 offset hinge set inward opening, 1 x SF4 intermediate hanger set, 1 x SF2R end hanger set - right hand.*
3+2 LEAF		1 x YS170, 4 x SF flushbolt, 2 x SF1 pivot set, 1 x SF4 intermediate hanger set, 1 x SF5 hinge set inward opening, 1 x SF6 offset hinge set inward opening, 1 x SF2L end hanger set - left hand.*
4+1 LEAF		1 x YS170, 4 x SF flushbolt, 2 x SF1 pivot set, 1 x SF4 intermediate hanger set, 2 x SF6 offset hinge set inward opening, 1 x SF2R end hanger set - right hand.*
5 LEAF		4 x SF flushbolt, 1 x SF1 pivot set, 2 x SF4 intermediate hanger set, 1 x SF5 hinge set inward opening, 1 x SF6 offset hinge set inward opening.
3+3 LEAF		1 x YS170, 6 x SF flushbolt, 2 x SF1 pivot set, 2 x SF4 intermediate hanger set, 2 x SF6 offset hinge set inward opening.
4+2 LEAF		6 x SF flushbolt, 2 x SF1 pivot set, 1 x SF4 intermediate hanger set, 1 x SF5 hinge set inward opening, 2 x SF6 offset hinge set inward opening, 1 x SF8 rebated end hanger meeting.
5+1 LEAF		1 x YS170, 6 x SF flushbolt, 2 x SF1 pivot set, 2 x SF4 intermediate hanger set, 1 x SF5 hinge set inward opening, 1 x SF6 offset hinge set inward opening.
6 LEAF		6 x SF flushbolt, 1 x SF1 pivot set, 2 x SF4 intermediate hanger set, 1 x SF5 hinge set inward opening, 2 x SF6 offset hinge set inward opening, 1 x SF2R end hanger set - right hand.*

The configurations shown above are viewed from the inside. They can be reversed, if reversed the parts marked * will have to be the opposite handing e.g. "SF2R end hanger set - right hand" will become "SF2L end hanger set - left hand" and "SF2L end hanger set - left hand" will become "SF2R end hanger set - right hand". The SF8 (rebated end hanger meeting) is illustrated in the split position on each door. Only one kit is required per door meeting point.



MULTIPOINT LOCKING

P C Henderson has worked in partnership with Yale to offer a durable multipoint lock, YS170. Sourced, supplied and stocked directly from P C Henderson, this lock holds the coveted Secured by Design and Insurance Approved accreditation and is fully compliant with PAS 24, BS 6375 and corrosion tested to BS EN 1670.

*P C Henderson recommend that all Securefold Ultra installations should use the Yale YS170 multipoint lock to ensure that the maximum level of security and burglar resistance is achieved. P C Henderson stock this lock and it can easily be added to your order with handles, anti-snap cylinder and keyfree digital operation as an optional extra.



Deadlocking latch with snib

- Easily reversible for re-handing
- Nightlatch function achieved by using split-spindle function
- Latch can be held in with snib

Centre hookbolt

- Extra level of security in centre of door
- Assists in door compression
- High level of security against attack

Top and bottom hookbolt

- Reverse hook bolts for anti-lift
- Assists door compression and reduced door bow
- High level of security against attack

Full striker range

- Three piece integral hook strikers
- Clearance on all apertures for 4mm door drop
- Adjustable latch and hook for ease of adjustment on-site

Handle

- Round bar lever/lever
- Available in gold and silver
- Tested to over 100,000 cycles

Keyfree

- Next generation digital door lock with no hard wiring
- Available on all multipoint locks supplied by P C Henderson
- Key fob, 10 metre range
- Key pad with 4-12 digit programmable code
- Fully alarmed unit

Yale anti-snap/anti-bump kitemarked

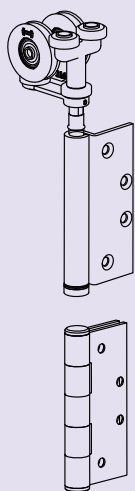
- Euro profile double cylinder
- Euro profile keyed alike in pairs
- Euro profile thumbturn cylinder



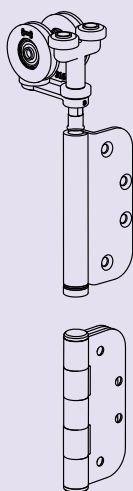
HINGE OPTIONS

P C Henderson offer a choice of four different hinge options in the Securefold range*, this enables us to offer our customers a choice in the look and feel of their project as well as variances on the preferred method of installation and door material.

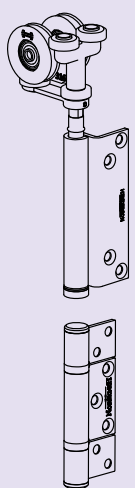
*excludes Securefold Ultra.



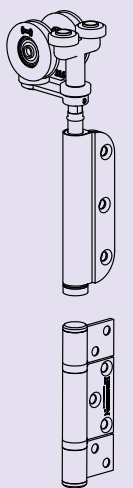
Mortice squared hinge



Mortice radius corner



Non mortice hinge



Standard Securefold hinge

Mortice squared hinge

Square edged hinges provide a rustic feel and look to any wood work application and these are often chosen for more traditional applications. The solid square appearance achieves the look of a timely installation as in the past and historically would have required precision routing by hand. Today there are other methods but some customers still prefer the hand carved qualities of traditional joinery. This hinge option is suitable for use on timber panels between 44-68mm thick and weighing up to 100kg.

Mortice radius corner

Radius cornered hinges offer a softer look and often suit the look and feel of contemporary applications. The smooth round edge complements the trend for minimalistic installation with a clean and modern finish. These hinges lend themselves perfectly to machine routing which aid the routing and fitting process. This hinge option is suitable for use on timber panels between 44-68mm thick and weighing up to 100kg.

Non mortice hinge

A non mortice hinge is an entirely surface mounted system that requires no routing or additional preparation before the fitting process. This is an easy and versatile option of hardware that is suitable for use on both the Securefold Timber and Securefold Aluminum. This option offers versatility and can be used on timber or aluminum panels between 35-68mm thick and weighing up to 100kg.

Standard Securefold hinge

The Securefold Standard hinge option combines morticed end leaf hinges to create a clean finish as it is concealed between the door and the jamb; it then uses the trusted surface mounted intermediate hinges for ease of installation across the remaining door configurations. Because of this, the standard hinge is suitable for all timber door leaves stated (35-68mm thick and weighing up to 100kg) and is a popular option when specifying internal or external folding doors as it features increased security performance.

HENDERSON

P C Henderson Limited

Durham Road, Bowburn,
County Durham DH6 5NG, UK
www.pchenderson.com

UK Technical Customer Services Team

Telephone: 0191 377 7345
Fax: 0191 377 3116
e-mail: sales@pchenderson.com

Export Technical Customer Services Team

Telephone: +44 (0) 191 377 7346
Fax: +44 (0) 191 377 0755
e-mail: international@pchenderson.com

P C Henderson (Ireland) Limited

Westlink Industrial Estate, Kylemore Road,
Dublin 10, Ireland
Telephone: +353 (0) 1 643 6816
Fax: +353 (0) 1 626 0455
e-mail: sales@pchenderson.ie

Henderson Nederland BV

Postbus 258, 5530 AG Bladel, Holland
Tel: +31 (0) 497 33 2020
Fax: +31 (0) 497 33 2029
e-mail: sales@henderson.nl
www.henderson.nl



@PCHendersonLtd

Securefold

August 2013



Certificate Number 10845
ISO 9001
ISO 14001

