



# Glass door hardware systems

*Design in motion*

October 2012

HENDERSON

# GLASS DOOR HARDWARE SYSTEMS

for sliding or folding glass doors with a maximum leaf weight up to 500kg

PC Henderson has long been acknowledged as the world leader in the design and manufacture of sliding and folding door hardware systems for residential, commercial and industrial applications.

Established in 1921, PC Henderson is based in Bowburn in North East England and has subsidiaries in Holland and Ireland. The company has a long established sales and distribution network in over 70 countries supported by Henderson's fully trained UK based technical sales team.

The company is committed to quality and is registered to BS EN ISO 9001: 2008 Quality Systems and Environmental Management Systems ISO 14001:2004.

As part of this commitment this brochure has been printed on carbon neutral paper in line with the FSC which promoted responsible management of the world's forests. This accreditation guarantees that only the amount of wood which the forest can regenerate naturally is cut down with minimal impact on the environment, wildlife and the indigenous people who reside there.

## CONTENTS

### Straight Sliding Systems

3	Zenith
4	Husky
6	Teleslide
8	GTS Glass Track Slider
10	Velaro
11	Sienna
12	Pacer
16	Cilindric
18	Traverse Sliding
19	Flexirol Sliding

### Folding Systems

20	Easyfold
22	Traverse Folding
23	Flexirol Folding

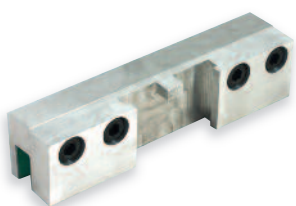
### Multidirectional Systems

24	Flexirol Multidirectional 90°
26	Traverse Multidirectional 135°
28	Flexirol Multidirectional 135°

### Accessories

31	Locks and lock accessories
31	Flush pulls
32	Handles
32	Fascias





GLASS DOOR HARDWARE SYSTEMS

# GLASS DOOR HARDWARE SYSTEMS

PC Henderson offers a range of glass products for commercial and residential applications where ease of use, durability and reliability are equally as important as aesthetic design.

With over 90 years experience in the industry, Henderson has become an acknowledged world leader in the design and manufacture of sliding and folding door hardware, securing its reputation as a specialist company amongst professionals in the industry.

## THE EXPERT SERVICE

If you have a project where you would like to use sliding or folding door hardware use the FREE Henderson Expert Service to supply your bill of materials, quantities, prices and drawings.

Simply contact our Technical Sales Department and based on the answers you give to a series of questions, including the opening size, door size and weight of the panels, we can specify the most suitable product. From this you will receive a full quotation from Henderson including:

- ▶ Quantity
- ▶ Price
- ▶ Drawings
- ▶ Fitting Instructions

If you wish to make a change to your original specification simply contact us and we will amend the original enquiry and issue you with a revised quotation.

It couldn't be simpler, leave it to the experts!



### **P C Henderson Ltd**

UK Technical Sales Team

Tel: 0191 377 7345

Fax: 0191 377 3116

e-mail: sales@pchenderson.com

Durham Road

Bowburn

Co. Durham

DH6 5NG

### **PC Henderson Ireland Ltd**

Tel: +353 (0)1 643 6816

Fax: +353 (0)1 626 0455

e-mail: sales@pchenderson.ie

Westlink Industrial Estate

Kylemore Road

Dublin 10

Ireland

### **Henderson Nederland BV**

Tel: +31 (0) 497 332020

Fax: +31 (0) 497 332029

e-mail: sales@henderson.nl

Postbus 258

5530 AG Bladel

Holland

### **International**

Tel: +44 (0)191 377 7346

Fax: +44 (0)191 377 0755

e-mail: international@pchenderson.com

Durham Road

Bowburn

Co. Durham

DH6 5NG

ZENITH

For sliding glass doors up to 25kg

Zenith is a versatile product ideally suited for bookcases, jewellery display panels, interior windows and lightweight glass doors. Manufactured using satin- anodised aluminum gear with brush-pile strips; this product delivers a silent and easy glide motion for a variety of applications.

Specification

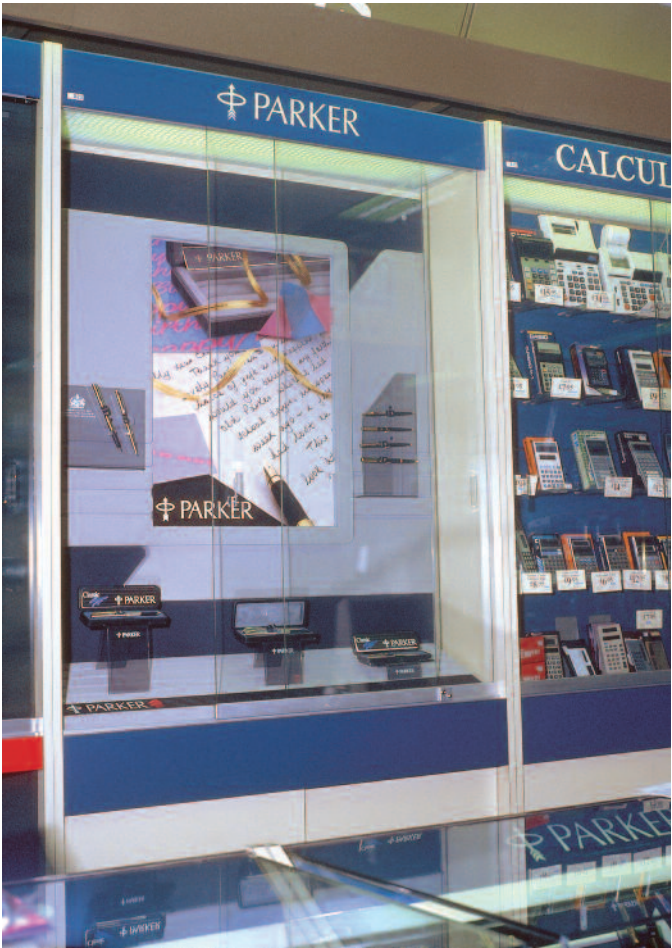
Maximum door weight	25kg
Maximum door height	1800mm
Maximum door width	916mm
Maximum glass thickness	6mm

Kits

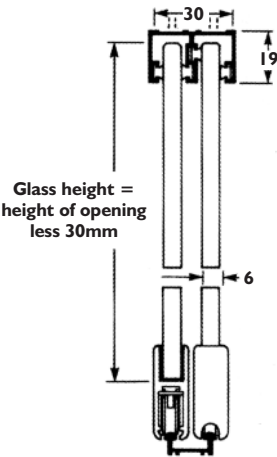
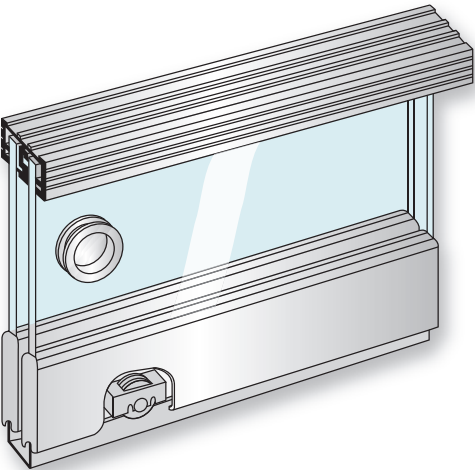
Kit	Maximum Opening Width	Number of doors
Z12	1200mm	2
Z15	1500mm	2
Z18	1800mm	2

Accessories

For details of our accessories please refer to page 31



SLIDING GLASS SYSTEMS



## HUSKY

for sliding glass doors up to 50kg and 75kg

Husky is the ideal solution for lightweight glass applications such as office doors and small glass partitions. Its versatility allows the kit to be face fixed or soffit fixed without compromising on the function of the system. The nature of these applications require quality aesthetic finishes and to meet this demand, Husky has an additional purpose designed clip on fascia for soffit fixed applications.

## Specification

Maximum door weight	<b>50kg and 75kg</b>
Maximum door height	<b>2400mm</b>
Maximum door width	<b>1250mm</b>
Glass thickness	<b>8mm, 10mm and 12mm</b>

## Technical information

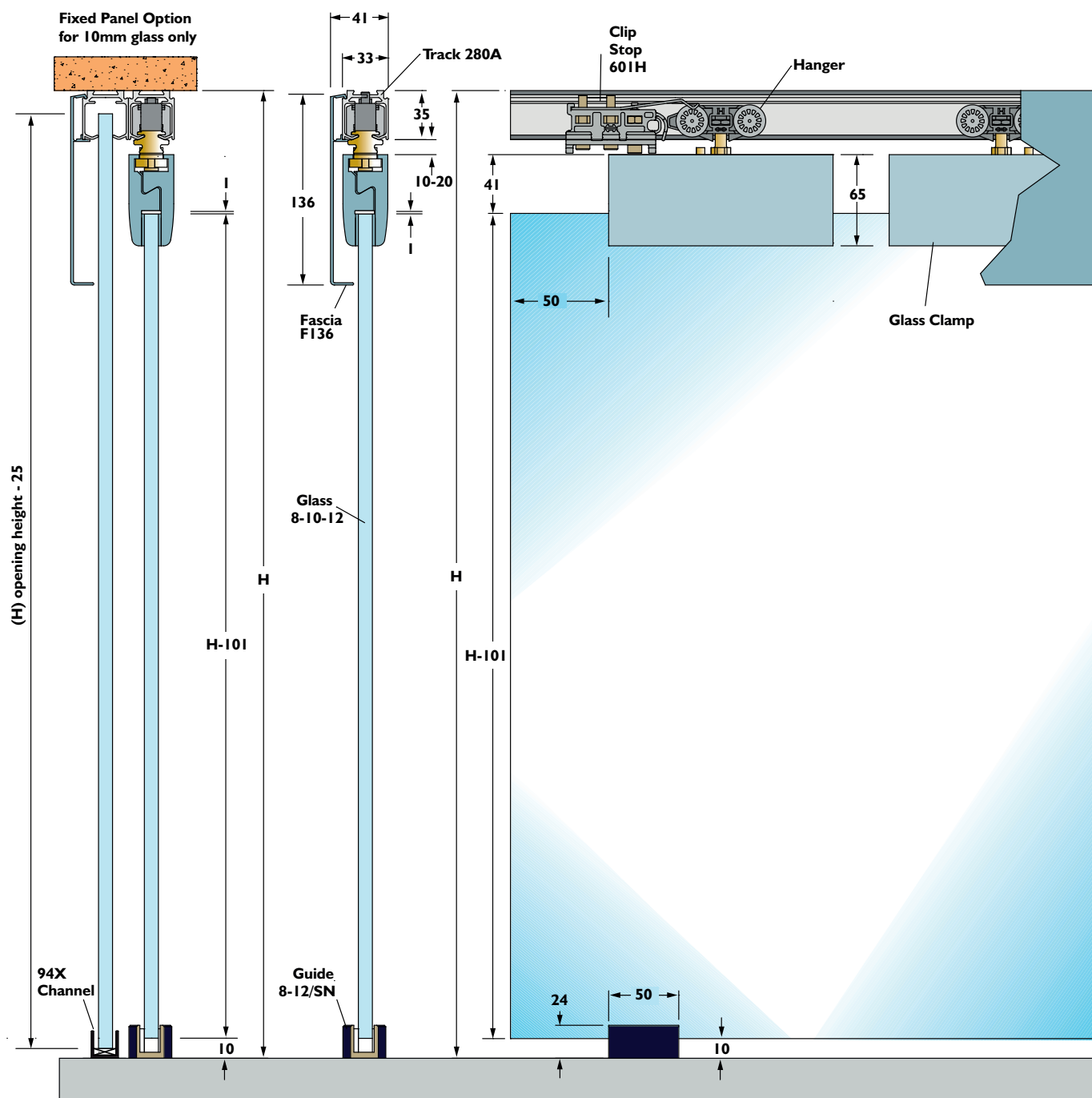
			Code
Track		(aluminium, mill finish)	<b>280A</b>
		(aluminium, anodised finish)	<b>280AN</b>
		Available in 1500, 2000, 2500 and 3000mm lengths	
Brackets	Face fix		<b>281A</b>
	Joining and End		<b>281AX</b>
Fascias	Soffit fixed track (anodised)		<b>F136</b>
Glass clamp kit	50kg	8mm glass	<b>8/HY/50</b>
		10mm glass	<b>10/HY/50</b>
		12mm glass	<b>12/HY/50</b>
	75kg	8mm glass	<b>8/HY/75</b>
		10mm glass	<b>10/HY/75</b>
		12mm glass	<b>12/HY/75</b>
	Kit consists of two hangers, two glass clamps, two 601H retaining stops and an adjustable guide		
Floor guide	brushed stainless steel		
	for 8, 10 or 12mm glass		<b>8-12/SN</b>

## Accessories

For details of our accessories please refer to page 31 and 32







## TELESLIDE

for sliding glass doors up to 60kg

Teleslide is a revolutionary telescopic single sliding glass door system, which allows the hardware to be assembled at the top of the door and installed on a corner wall.

The system has been designed as a versatile solution for wall fixed single door left or right sliding applications and is available in an anodised silver finish.



## Specification

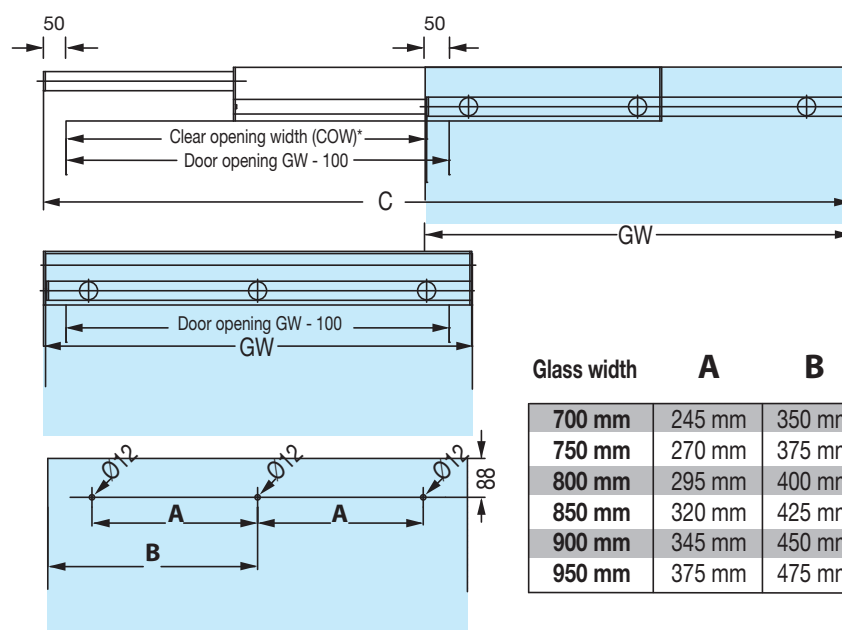
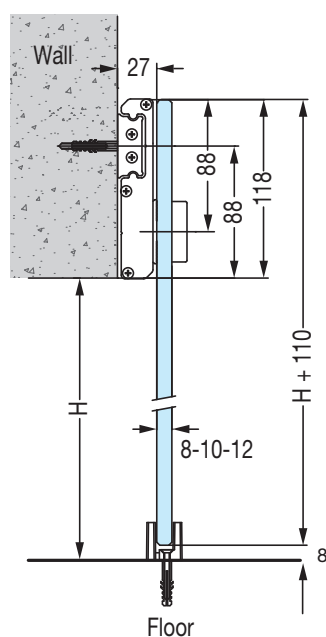
Maximum door weight	<b>60kg</b>
Maximum door width	<b>950mm</b>
Glass thickness	<b>8mm, 10mm and 12mm</b>

## Single left-sliding door kit

Glass width	Code
700mm	<b>TS700SL</b>
750mm	<b>TS750SL</b>
800mm	<b>TS800SL</b>
850mm	<b>TS850SL</b>
900mm	<b>TS900SL</b>
950mm	<b>TS950SL</b>

## Single right-sliding door kit

Glass width	Code
700mm	<b>TS700SR</b>
750mm	<b>TS750SR</b>
800mm	<b>TS800SR</b>
850mm	<b>TS850SR</b>
900mm	<b>TS900SR</b>
950mm	<b>TS950SR</b>



Glass width	A	B	Open system width C
<b>700 mm</b>	245 mm	350 mm	1384 mm
<b>750 mm</b>	270 mm	375 mm	1470 mm
<b>800 mm</b>	295 mm	400 mm	1557 mm
<b>850 mm</b>	320 mm	425 mm	1644 mm
<b>900 mm</b>	345 mm	450 mm	1730 mm
<b>950 mm</b>	375 mm	475 mm	1812 mm

\*Clear opening width will be affected by handle type chosen





# GTS GLASS TRACK SLIDER

for sliding glass doors up to 90kg

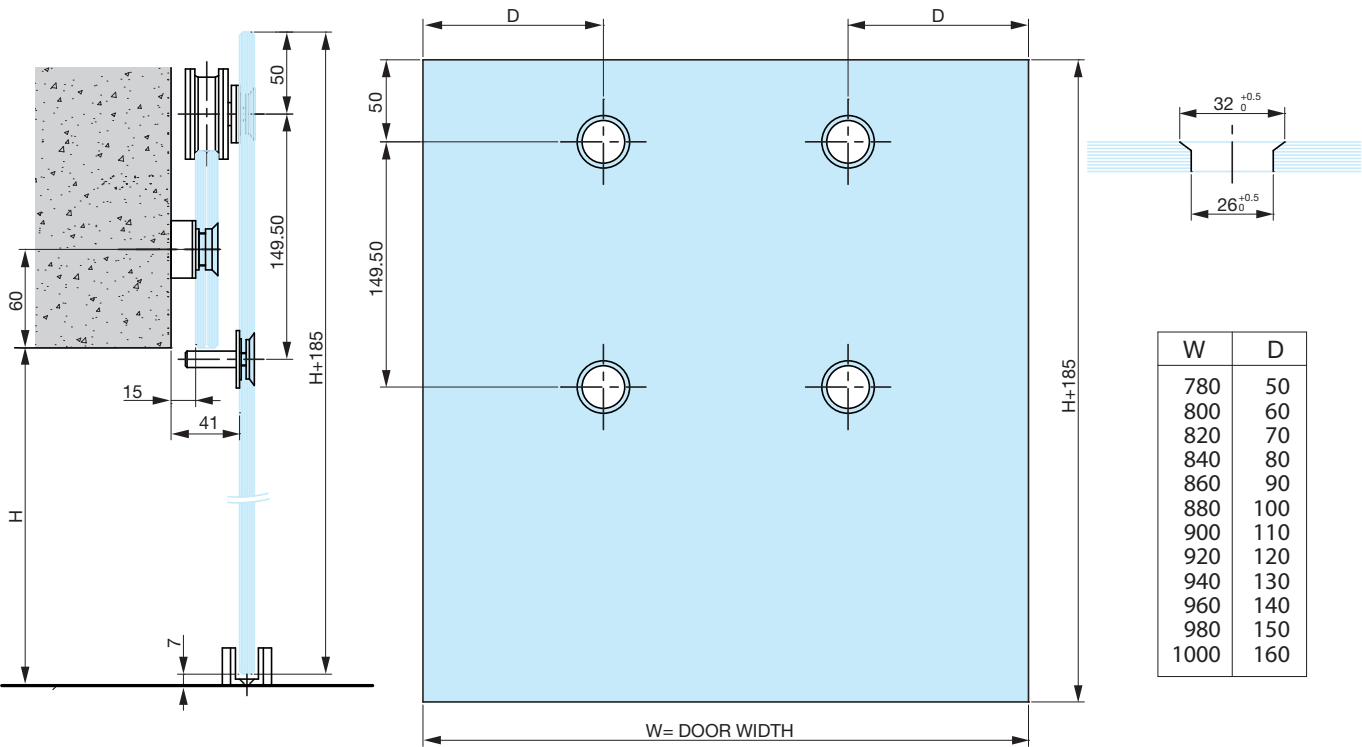
GTS Glass Track Slider is ideal for high end applications where aesthetics and ease of operation are paramount. This enhanced system ensures a clean and gentle operation and is ideal for premium residential and commercial wall installations.

Specification

Maximum door weight	90kg
Maximum door height	3000mm
Maximum door width	1000mm
Glass thickness	8mm, 10mm and 12mm

Kit contents

	Code
Kit	GTS1678
Kit consists of glass track (1678mm) three fixing screws, two trolleys, two anti-derailing pins, two stops and one floor guide.	







## VELARO

for sliding glass doors up to 80kg

Velaro has been designed and tested for interior applications and features a concealed, smooth and quiet operating system thanks to its purpose built polymer rollers and brush strip within the track.

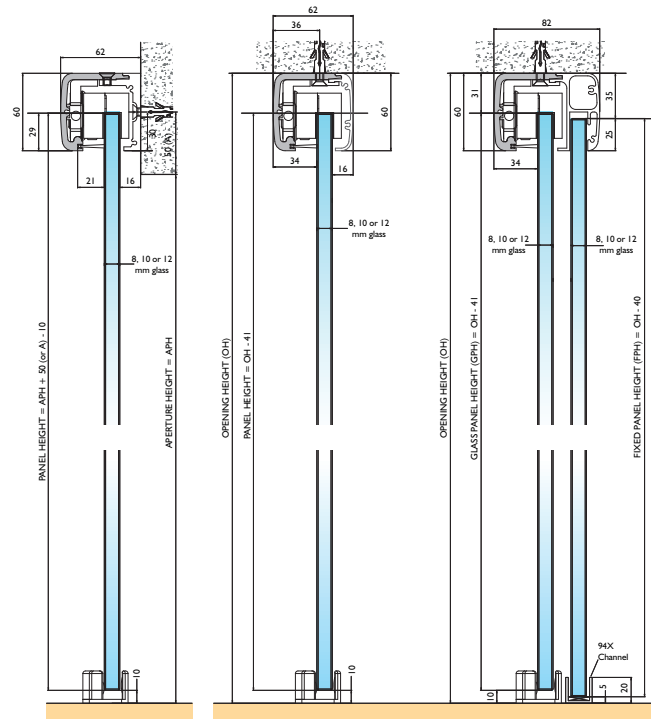
Ideal for soffit and face fixed installations; this single door system incorporates stylish design with unrivalled performance to create a modern and minimalistic finish, with all parts concealed within the track.

## Specification

Maximum door weight	<b>80kg</b>
Maximum door height	<b>2500mm</b>
Maximum door width	<b>1200mm</b>
Glass thickness	<b>8mm, 10mm and 12mm</b>

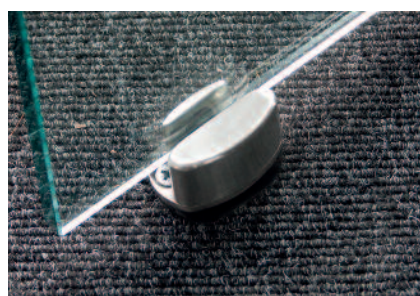
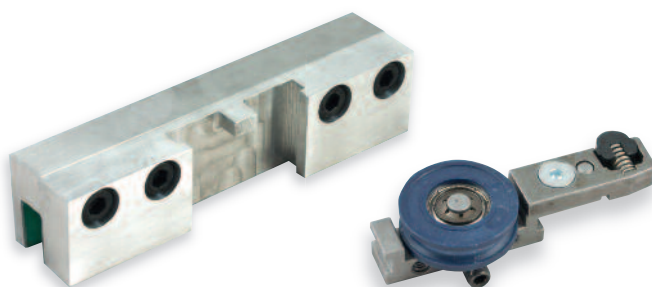
## Technical information

		Code
Track	Anodised aluminium	
	Available in 2000mm, 2500mm, 3000mm, 3500mm, 4000mm, 5000mm and 6000mm lengths complete with brush strips and end caps.	
Face fix profile		<b>V80FF</b>
Soffit fix profile		<b>V80SF</b>
Fixed panel profile		<b>V80FP</b>
Glass clamp kit	8mm glass	<b>V80/8</b>
	10mm glass	<b>V80/10</b>
	12mm glass	<b>V80/12</b>
	Kit consists of: two clamps complete with gaskets, two clip stops, one brushed stainless steel adjustable floor guide.	



Panel height =  
 $APH + 50 - 10$   
 or  $APH + (A) - 10$

Glass panel height (GPH) = Opening height - 41mm  
 Fixed panel height (FPH) = Opening height - 40mm





# SIENNA

for sliding glass doors up to 120kg

This elegant frameless system creates a minimalistic look thanks to the modern design of the stainless steel hangers. Specialised rollers have been engineered to effortlessly run along a brushed stainless steel tubular track, enabling this system to be one of the most efficient on the market.

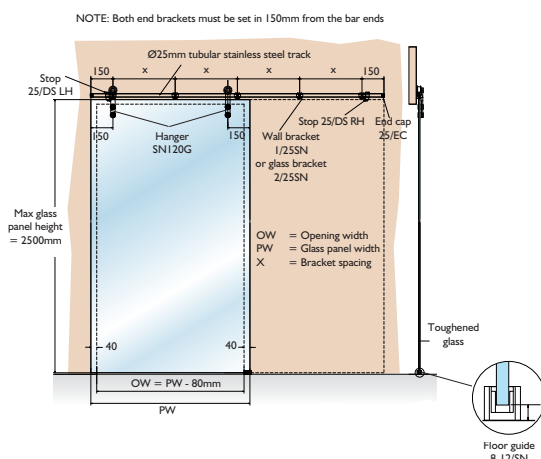
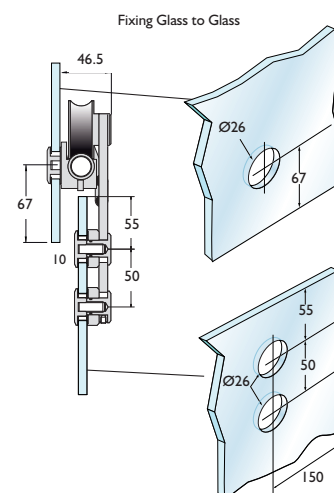
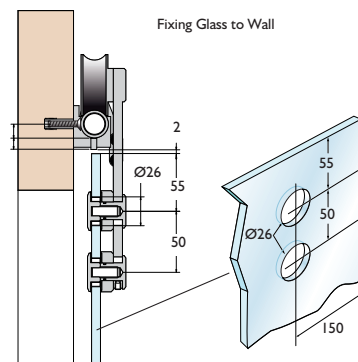
The system has been designed for use with applications requiring glass door to glass wall or glass door to solid wall fixings.

## Specification

Maximum door weight	<b>120kg</b>
Maximum door height	<b>2500mm</b>
Maximum door width	<b>1400mm</b>
Glass thickness	<b>8mm, 10mm and 12mm</b>

## Technical information

	Code
Basic kit	2 hangers, 2 door stops, one guide, <b>SN120G</b>
	2 bar end caps, one fitting tool and 2 Allen keys
Track	Ø25mm stainless steel tubular track available in standard lengths up to 6000mm
Brackets	Face-fix bracket for solid wall <b>1/25SN</b> Face-fix bracket for glass wall <b>2/25SN</b>
Floor guide	for 8, 10 and 12mm glass <b>8-12/SN</b>
Door stop	Stop right hand <b>25/DSR</b> Stop left hand <b>25/DSL</b>
Handle	For details of our handles and other accessories please refer to page 31 and 32



## PACER

for sliding glass doors weighing up to 130kg  
and 180kg

The Pacer glass system can accommodate both sliding and fixed door panels, making it ideal for interior dividers in offices and shops as well as more modern applications in new developments. The nature of these applications require quality aesthetic finishes and to meet this demand, Pacer has an additional purpose designed clip on fascia for both soffit fixed and face fixed applications.

## Specification

Maximum door weight	<b>130kg and 180kg</b>
Maximum door height	<b>3000mm</b>
Maximum door width	<b>3000mm</b>
Glass thickness	<b>8mm, 10mm and 12mm</b>

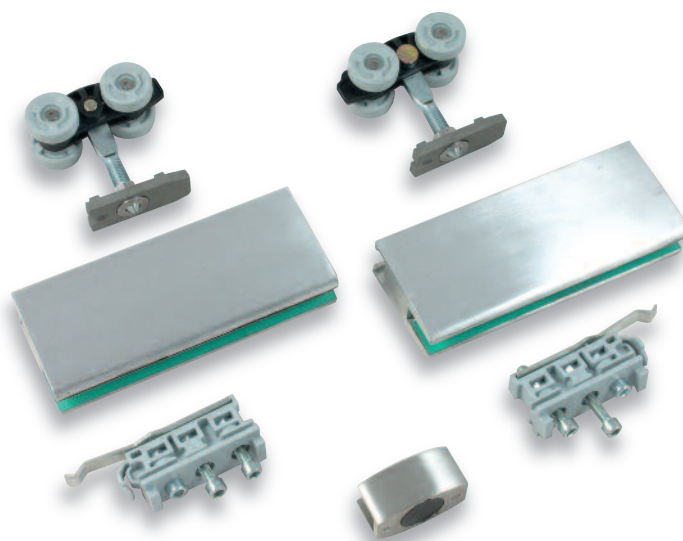
## Technical information

		Code
Track*	Anodised aluminium	<b>600/xxxxAN</b>
	Mill finish aluminium	<b>600/xxxx</b>
Fixed glass panel bracket		<b>600FPB</b>
All profiles available in 2000, 2500, 3000, 3500, 4000 and 6000mm lengths		
Brackets	Face fix	<b>1B</b>
	Jointing bracket	<b>1BX</b>
Fascias	Soffit fixed track	<b>F160X</b>
	Face fixed track	<b>F200X</b>
Glass clamp kit	130kg	8mm glass <b>8/PA/130</b>
		10mm glass <b>10/PA/130</b>
		12mm glass <b>12/PA/130</b>
	180kg	8mm glass <b>8/PA/180</b>
		10mm glass <b>10/PA/180</b>
		12mm glass <b>12/PA/180</b>
Floor guide	for 8, 10 or 12mm glass panels	<b>8-12/SN</b>
Kit consists of two 56 hanger assemblies, two glass clamp assemblies, a universal guide and two 60IP retaining stops		

\*Replace xxxx with length of track required

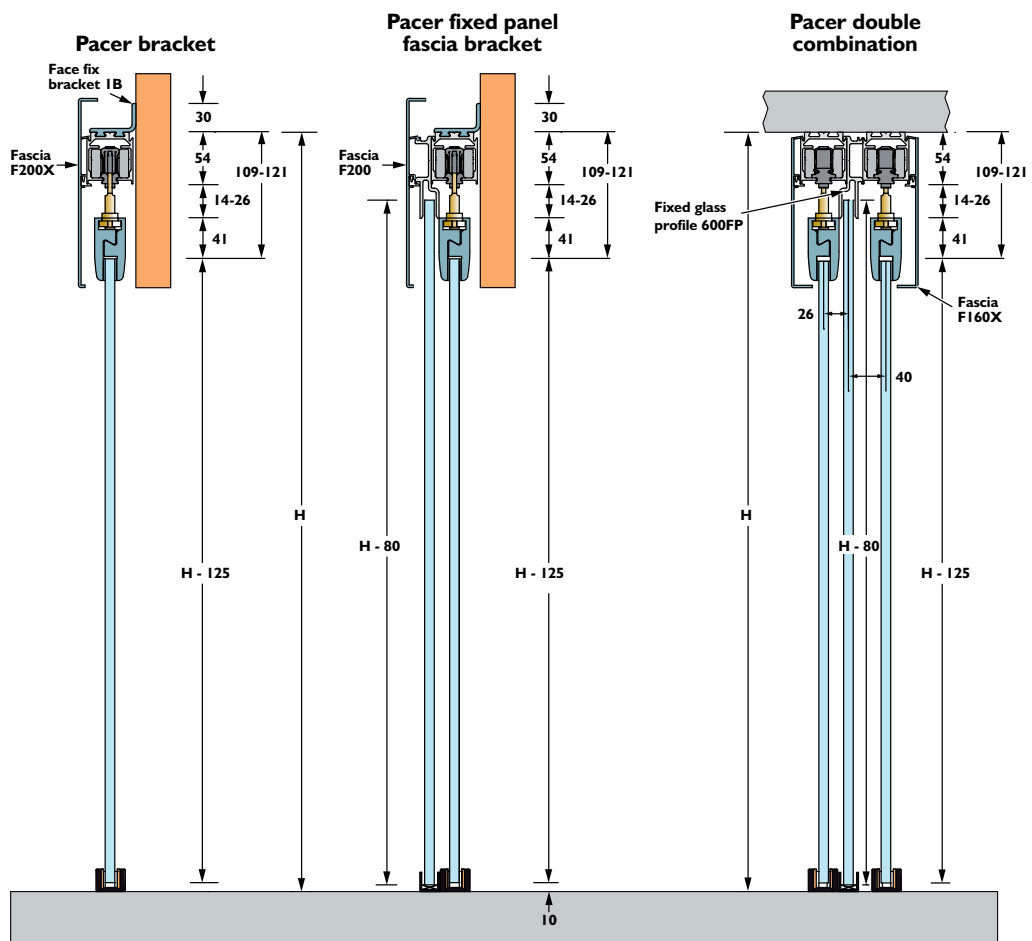
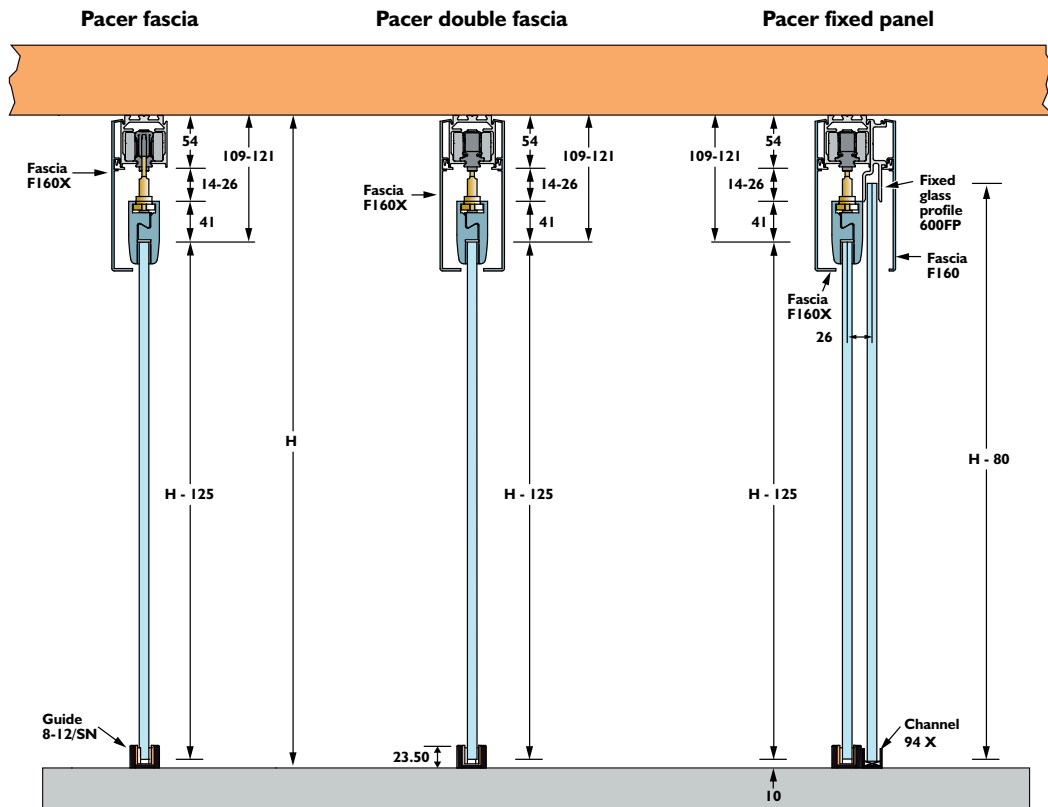
## Accessories

For details of our accessories please refer to page 31

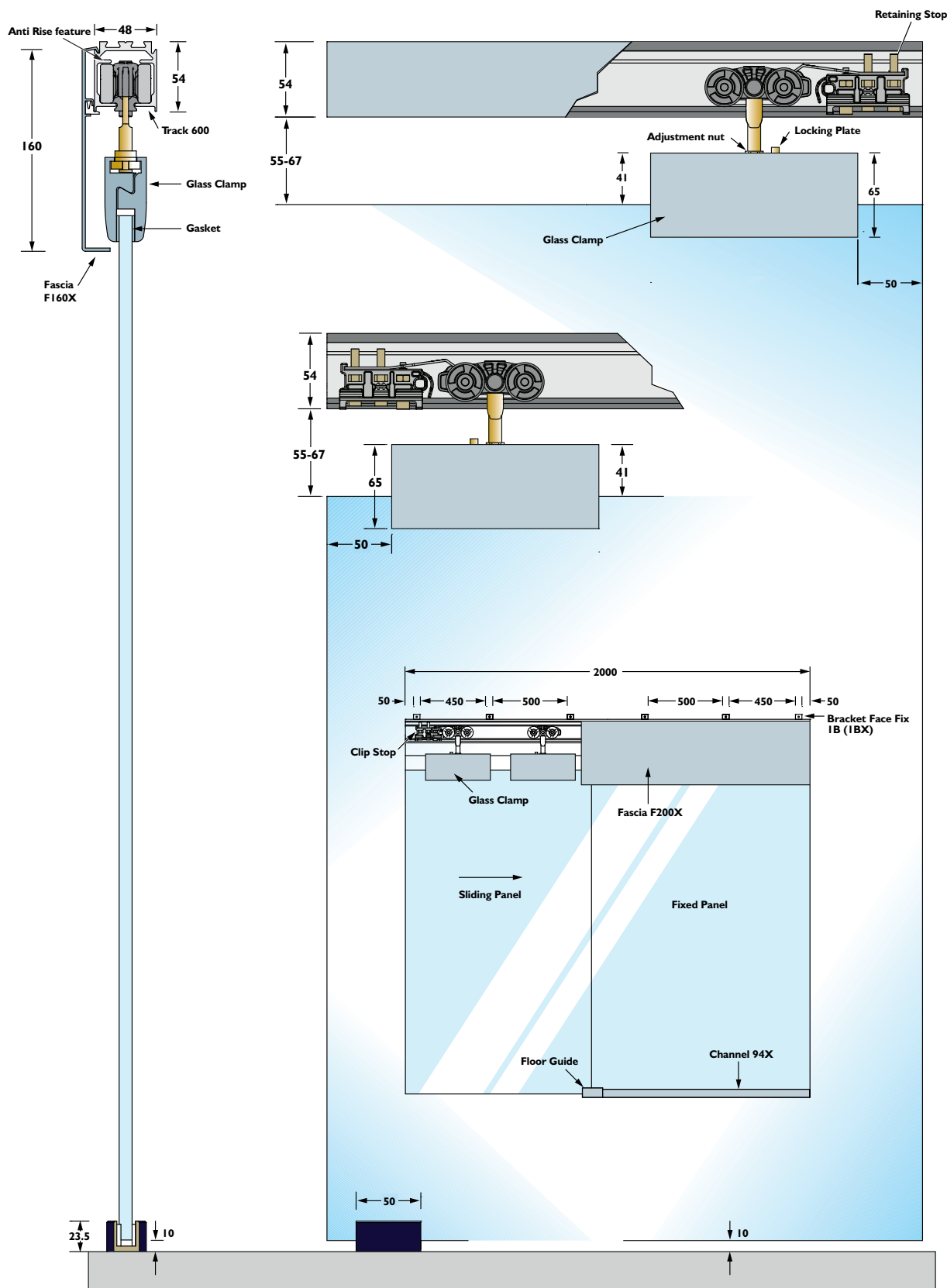












## CILINDRIC

for top-hung glass doors up to 200kg

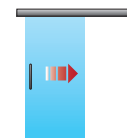
Cilindric is a versatile solid stainless steel straight sliding system capable of installation applications weighing up to 200kg. This silent smooth running system offers three possible installation options: wall, ceiling or transom allowing it to be suited to a variety of applications, where style and aesthetics are equally as important as function and durability.

## Specification

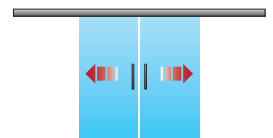
Maximum door weight	<b>200kg</b>
Glass thickness	<b>10mm and 12mm</b>

## Technical Information

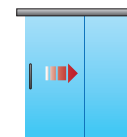
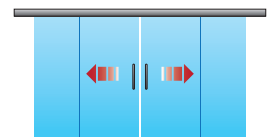
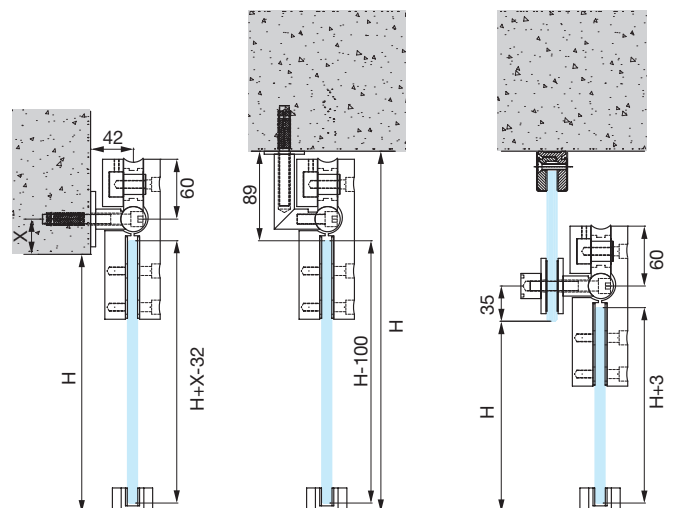
		Code
Hanger		<b>CR01</b>
Rail	3000mm (6 holes)	<b>C3000</b>
	3500mm (7 holes)	<b>C3500</b>
	4000mm (8 holes)	<b>C4000</b>
Brackets	Wall to rail	<b>CR02</b>
	Wall to rail bracket cover	<b>C581</b>
	Wall to rail end bracket	<b>CR02K</b>
	Glass to rail (standard)	<b>CR05</b>
	Glass to glass/glass to rail (double)	<b>CR06</b>
	Ceiling to rail	<b>CR07</b>
	Wall/ceiling to fixed panel bracket (hanger design)	<b>CR28</b>
Door stop	Left hand	<b>CR03L</b>
	Right hand	<b>CR03R</b>
Floor guide	for 10mm or 12mm glass	<b>8-12/SN</b>
Tightening key		<b>CT05</b>



Single door



Double doors

Single door  
+ Fixed panelDouble doors  
+ Fixed panel



# TRAVERSE SLIDING

for sliding glass doors weighing up to 250kg

Traverse sliding is a unique straight sliding system for glass doors weighing up to 250kg.

Ideally suited to both internal and external applications, it is an ideal product for hotels, offices, shop fronts and showrooms or any site that requires high performance and an attractive finish.

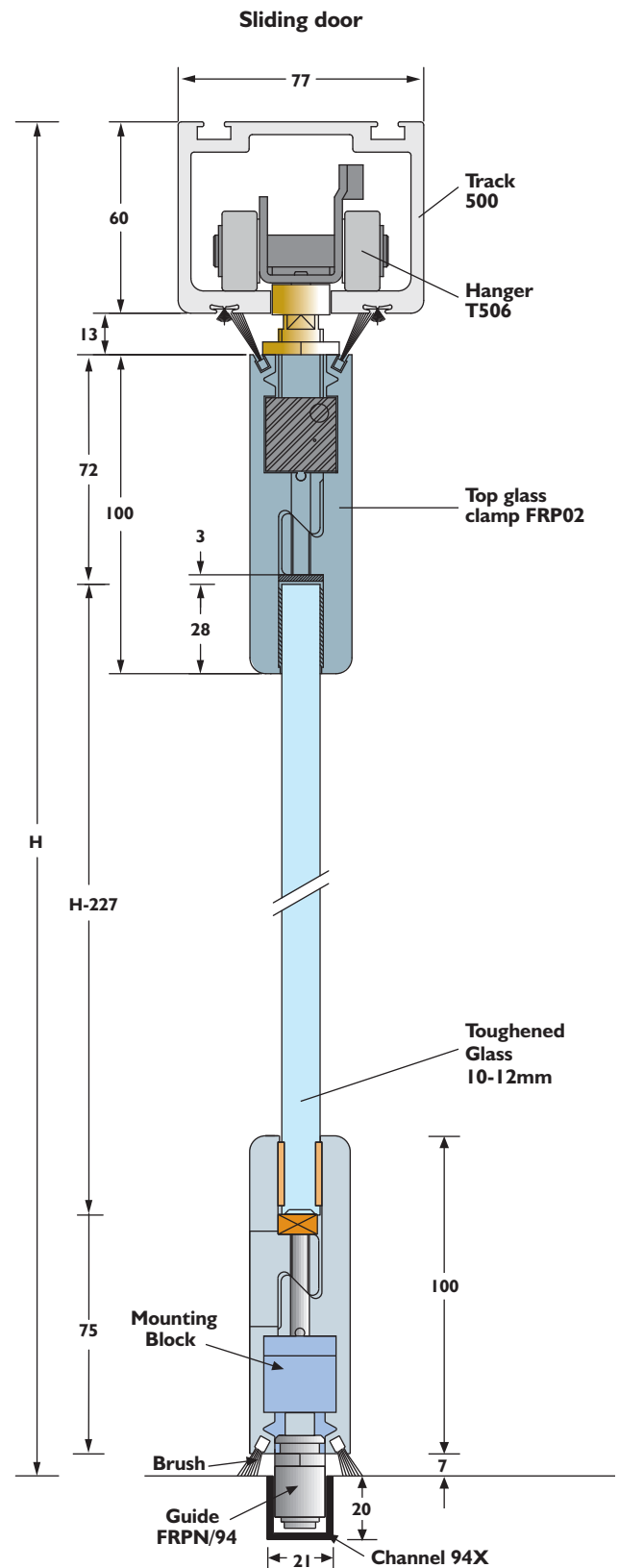
A versatile system that offers both face fixed and soffit fixed installations, its stylish design offers a modern, durable finish.

## Specification

Maximum door weight	<b>250kg</b>
Maximum door height	<b>toughened glass - 3000mm</b>
Glass thickness	<b>toughened glass - 10mm and 12mm</b>

## Technical information

	Code
Track	Anodised aluminium <b>500</b>
Brackets	Face fix <b>1A/500</b>
	Soffit fix <b>3S/500</b>
Hangers	with mounting block <b>T506</b>
Glass Profile	<b>FRP02</b>
Guides	with mounting block <b>FRPN/94</b>
Guide Channel	Aluminium <b>94X</b>
	Aluminium threshold/guide channel <b>94T</b>





# FLEXIROL SLIDING

for sliding glass doors up to 500kg

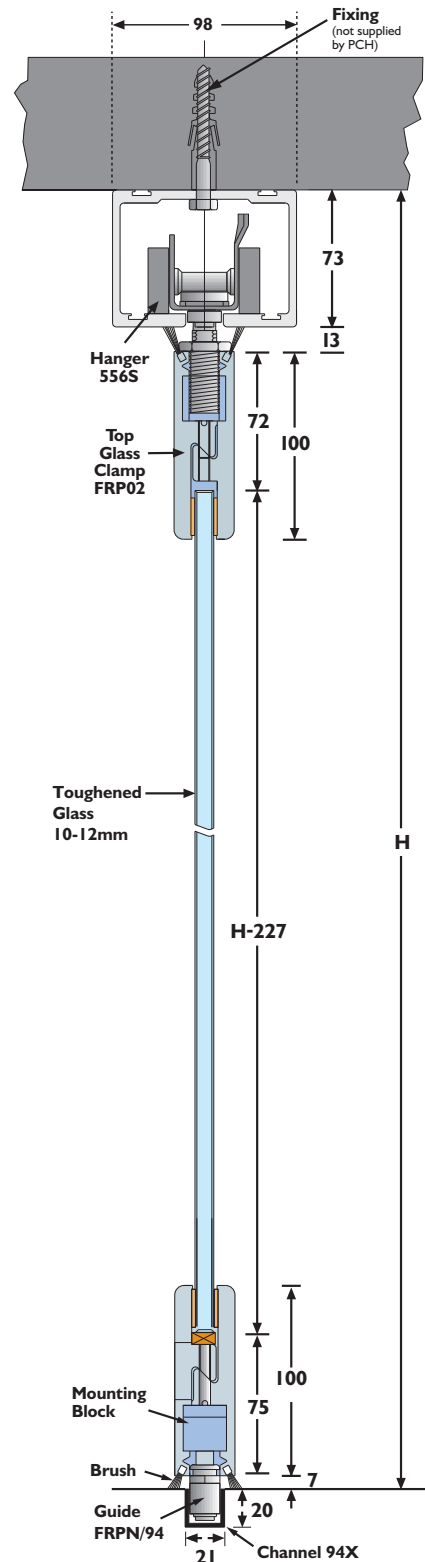
Flexirol is a unique system ideally suited to large doors that require high performance as well as an attractive finish. It's an ideal product for hotels, offices, conference centres, shop fronts and showrooms where durability and design are paramount.

## Specification

Maximum door weight	<b>500kg</b>
Maximum door height	<b>toughened glass - 4000mm</b>
Glass thickness	<b>toughened glass - 10mm and 12mm</b>

## Technical information

		Code
Track	Mill finish or white aluminium	<b>550</b>
Brackets	Face fix	<b>1A/550</b>
	Soffit fix	<b>3S/550</b>
Hangers	with mounting block	<b>556S</b>
Glass Profile		<b>FRP02</b>
Guides	with mounting block	<b>FRPN/94</b>
	Brass	<b>94</b>
Guide Channel	Aluminium	<b>94X</b>
	Aluminium threshold/guide channel	<b>94T</b>



## EASYFOLD

for folding glass panels up to 45kg

Easyfold is a system designed for both interior and exterior applications. Panels are connected using a system of glass hinges, to cover a wide range of applications.

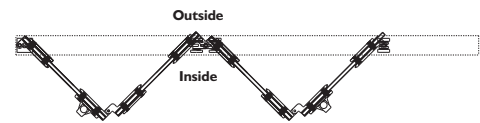
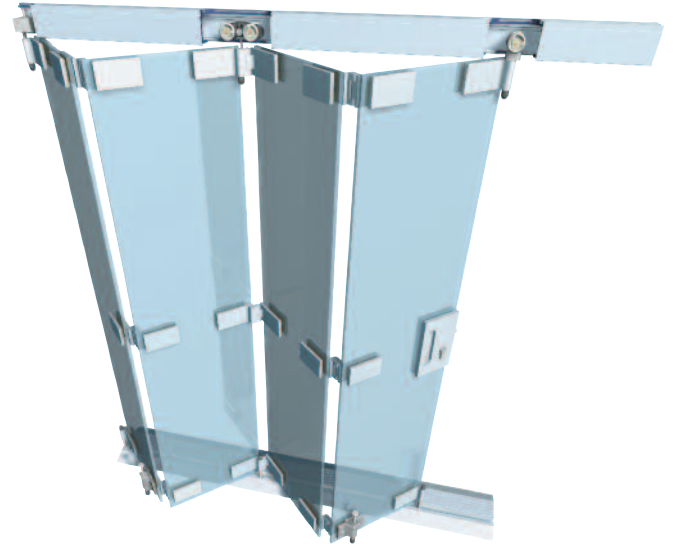
The hardware is available in four stylish finishes, white powder coat, polished anodised, silver anodised and black anodised to further enhance the aesthetic versatility of the product.

## Specification

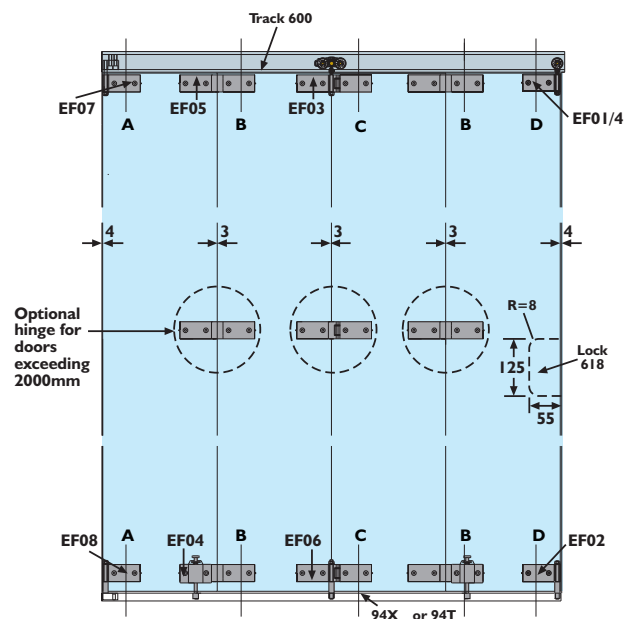
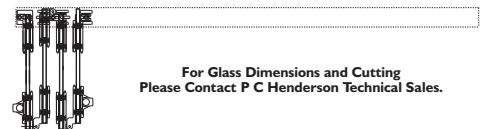
Maximum panel weight	<b>45kg</b>
Maximum panel height	<b>2400mm</b>
Maximum panel width	<b>750mm</b>
Glass thickness	<b>8mm and 10mm</b>
Maximum number of doors	<b>6 to one side</b>

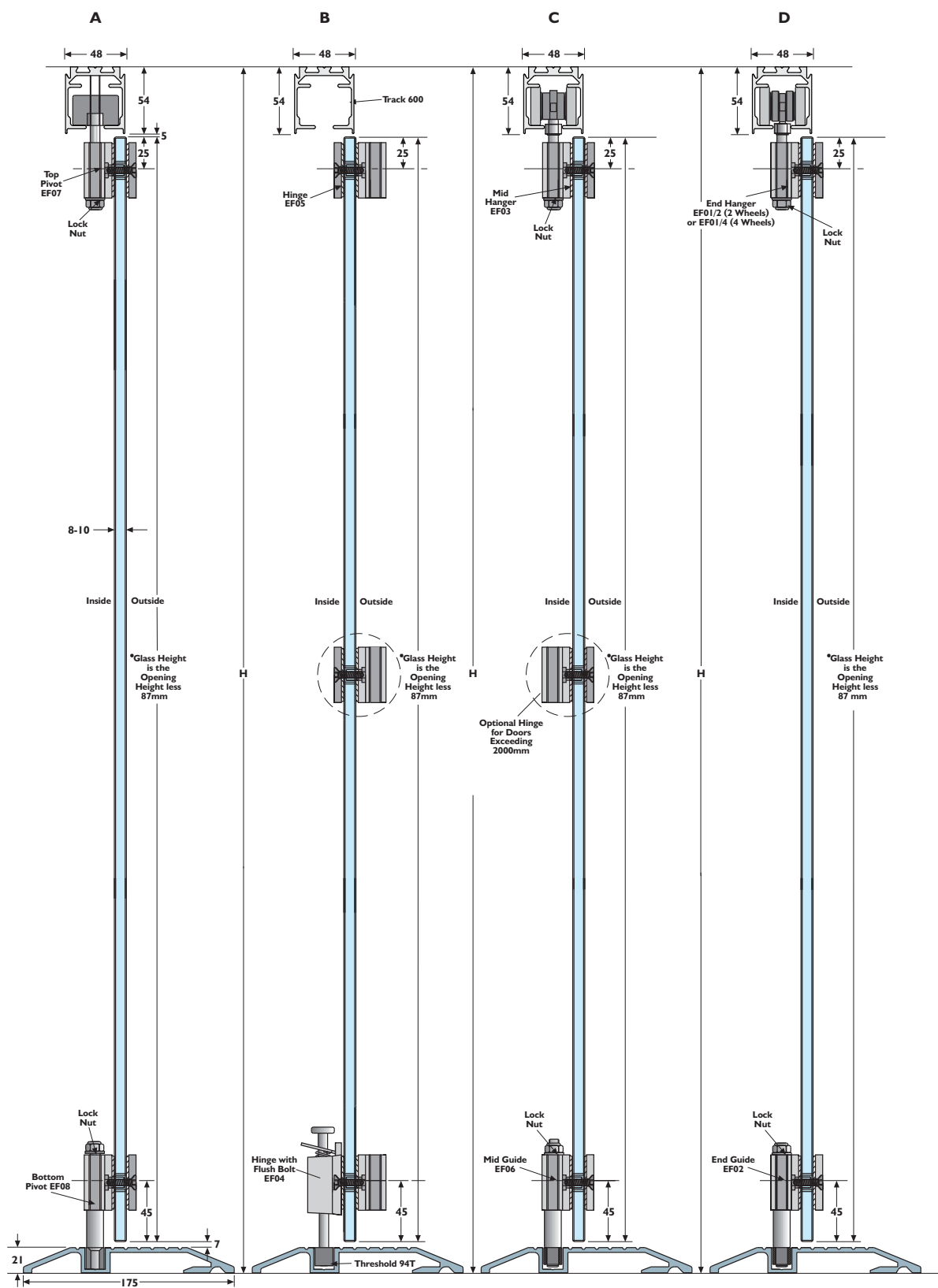
## Technical information

		Code
Track	Mill finish aluminium	<b>600</b>
	Available in 2000mm, 2500mm, 3000mm 3500mm, 4000mm and 6000mm lengths	
Brackets	Face fix (at 500mm intervals)	<b>IB</b>
	Joining bracket	<b>IBX</b>
Hangers	Four wheeled end hanger with single hinge	<b>EF01/4SA</b>
	Four wheeled intermediate hanger with double hinge	<b>EF03SA</b>
	Double hinge	<b>EF05SA</b>
Pivots	Top pivot with single hinge	<b>EF07SA</b>
	Bottom pivot with single hinge	<b>EF08SA</b>
Guides	End guide with single hinge	<b>EF02SA</b>
	Intermediate guide with double hinge	<b>EF06SA</b>
Guide Channel	Aluminium	<b>94X</b>
	Aluminium threshold/guide channel	<b>94T</b>



Plan: 4 Doors Folding to the Left





**\*In Combination with 94X Glass Height is the Opening Height less 66mm**

**For Glass Dimensions and Cutting Please Contact P C Henderson Technical Sales.**

## TRAVERSE FOLDING

for folding glass doors weighing up to 60kg

Traverse folding is suited to glass panels of up to 60kg, in both exterior and interior applications, where panels can either end fold or centre fold.

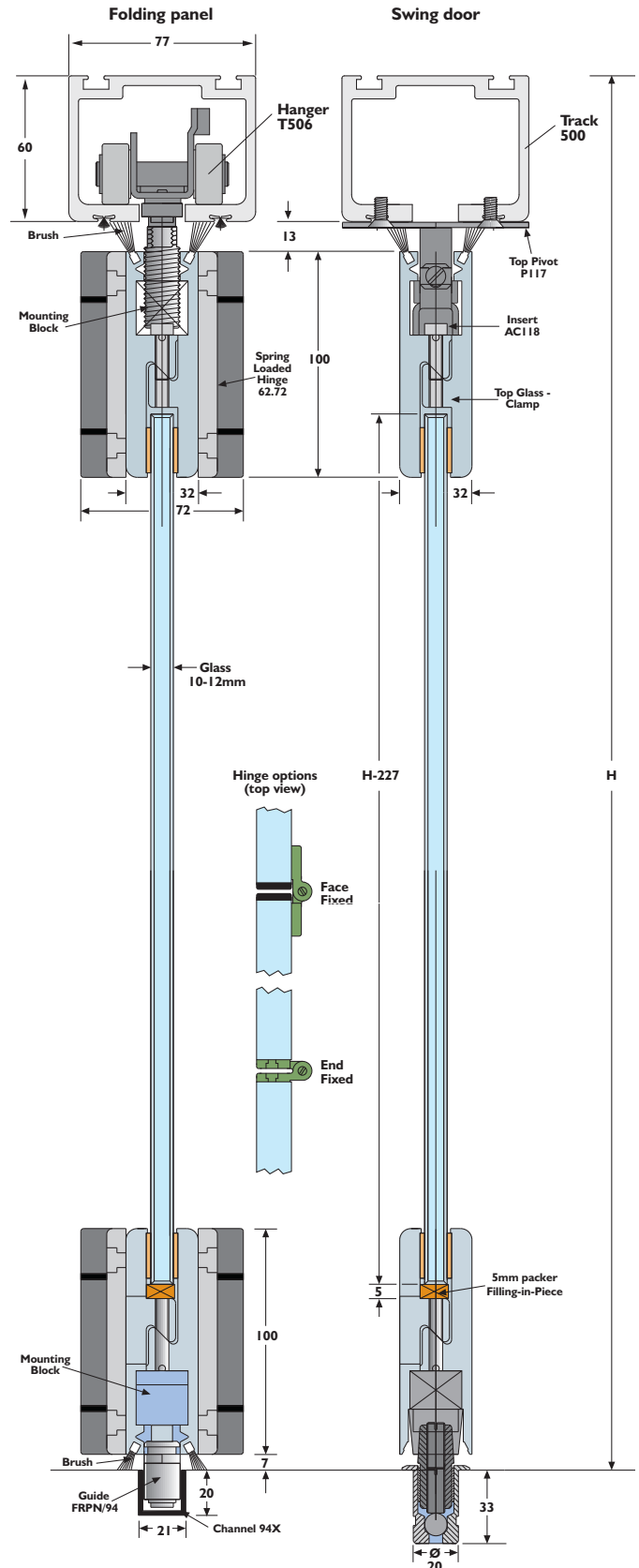
Available in a stylish aluminium finish, importance is placed equally on the quality aesthetics of the product along with performance and durability.

## Specification

Maximum door weight	<b>60kg</b>
Maximum door height	<b>2500mm</b>
Maximum door width	<b>900mm</b>
Glass thickness	<b>toughened glass - 10mm and 12mm</b>

## Technical information

		Code
Track	Anodised aluminium	<b>500</b>
Brackets	Face fix	<b>1A/500</b>
	Soffit fix	<b>3S/500</b>
Hangers	with mounting block	<b>T506</b>
Glass Profile		<b>FRP02</b>
Pivots	Glass pivot set	<b>21/500GP</b>
Guides	with mounting block	<b>FRPN/94</b>
Guide Channel	Aluminium	<b>94X</b>
	Aluminium threshold/guide channel	<b>94T</b>
Hinges	Adjustable spring loaded	<b>62.72</b>





# FLEXIROL FOLDING

for top-hung folding glass doors up to 125kg

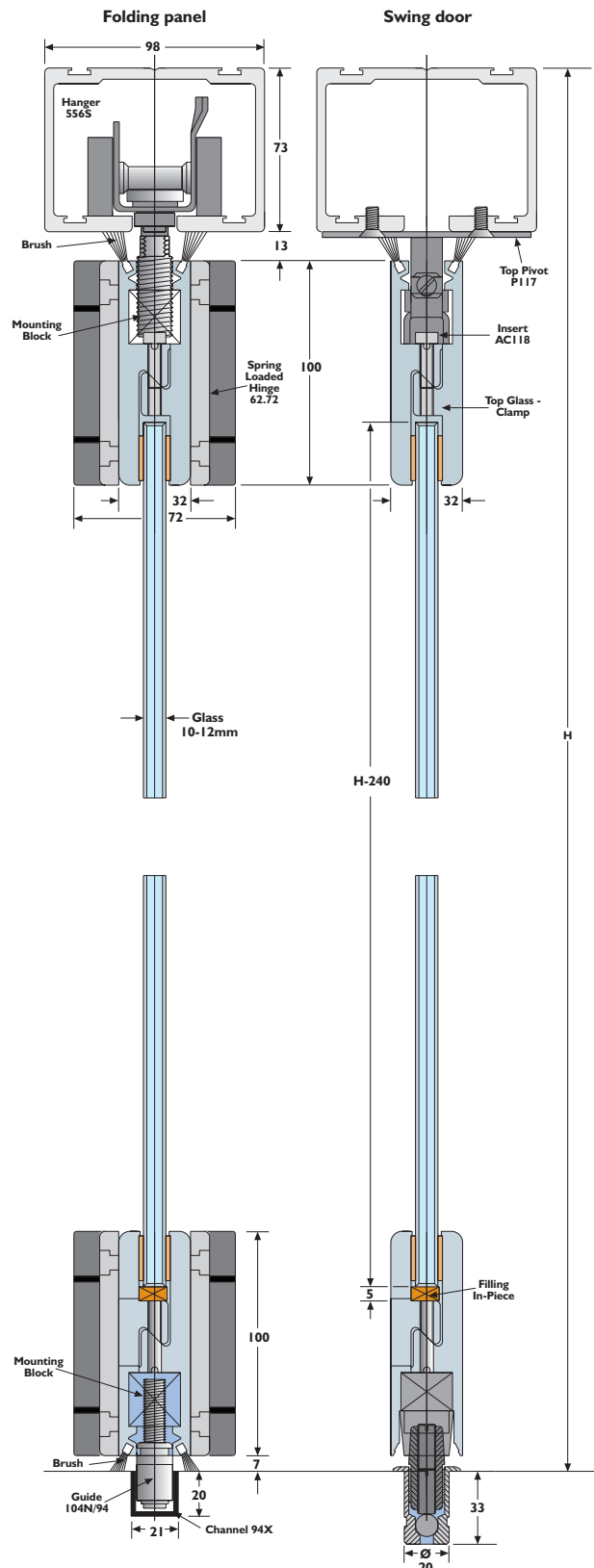
Flexirol folding is a bespoke product suited to heavy glass panels, in both interior and exterior applications. Panels can either centre fold or end fold depending on the positioning of the hanger, within the full width profile. Flexirol profiles are available in a variety of finishes and made to measure with the necessary routing completed.

## Specification

Maximum door weight	<b>125kg</b>
Maximum door height	<b>2500mm</b>
Maximum door width	<b>900mm</b>
Glass thickness	<b>toughened glass - 10mm and 12mm</b>

## Technical information

		Code
Track	Mill finish or white aluminium	<b>550</b>
Brackets	Face fix (at 500mm intervals)	<b>1A/550</b>
	Soffit fix	<b>3S/550</b>
Hangers	with mounting block	<b>556S</b>
Pivots	Glass pivot set	<b>21/550GP</b>
Glass Profile		<b>FRP02</b>
Guides	with mounting block	<b>FRPN/94</b>
Guide Channel	Aluminium	<b>94X</b>
	Aluminium threshold/guide channel	<b>94T</b>
Hinges	Adjustable face-fixed spring-loaded	<b>62.72</b>



# FLEXIROL MULTIDIRECTIONAL 90°

for top-hung glass doors up to 100kg

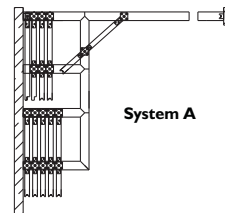
Flexirol Multidirectional 90° is designed for lightweight glass panels, in residential or commercial environments requiring 90° flexible movement options. The system is ideal for shop fronts or internal room partitions and also benefits from a stacking formation, which allows the doors to be stored clear of the threshold.

## Specification

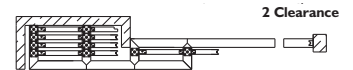
Maximum door weight when using 2 hangers per leaf	<b>100kg</b>
Maximum door height	<b>toughened glass - 4000mm</b>
Maximum swing door width	<b>1200mm</b>
Glass thickness	<b>toughened glass - 10mm and 12mm</b>

## Technical information

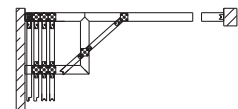
		Code
Track	Mill finish or white aluminium	<b>550</b>
Brackets	Face fix	<b>1A/550</b>
	Soffit fix	<b>3S/550</b>
Hangers	90° hanger	<b>555S</b>
Glass Profile	Top/bottom glass and swing profile	<b>FRP02</b>
Pivots	Glass pivot set	<b>21/550GP</b>



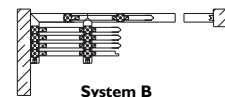
System A



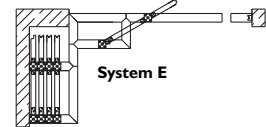
System C



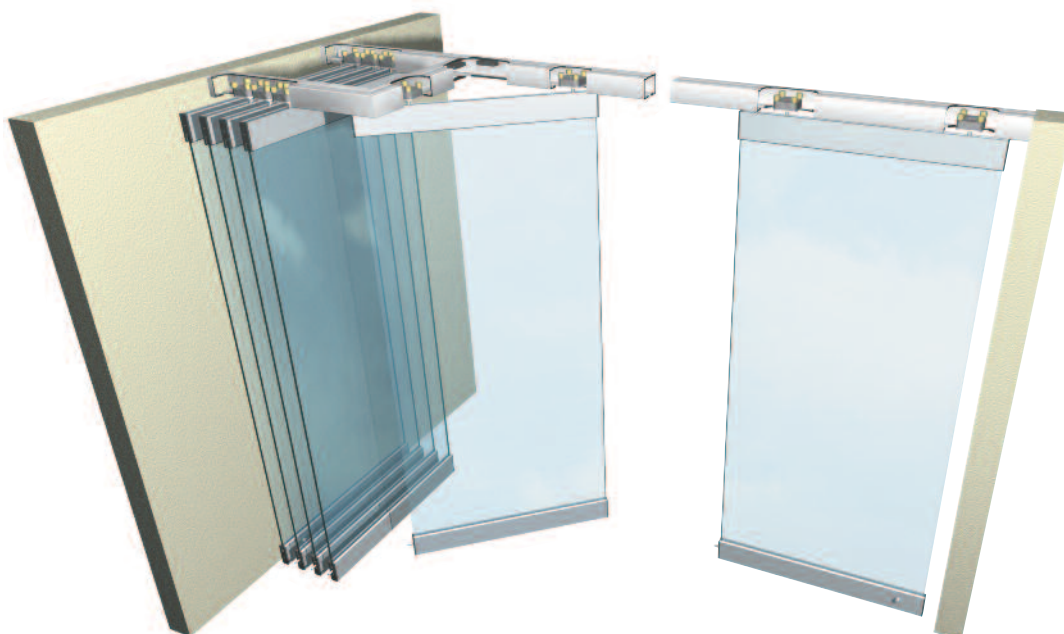
System D



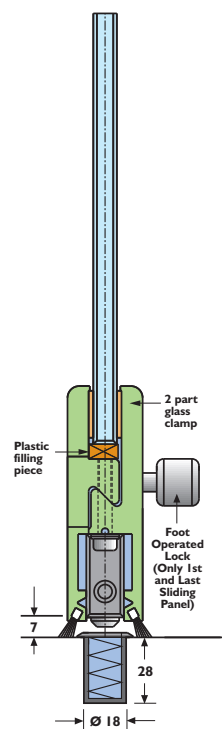
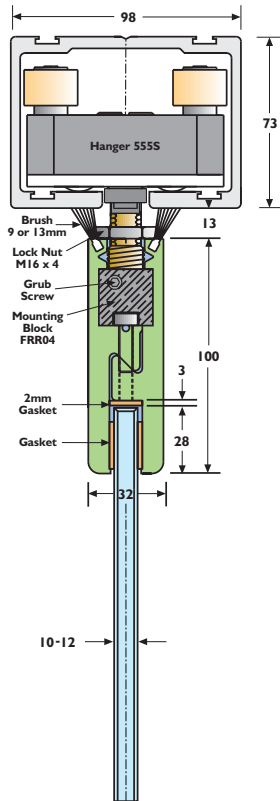
System B



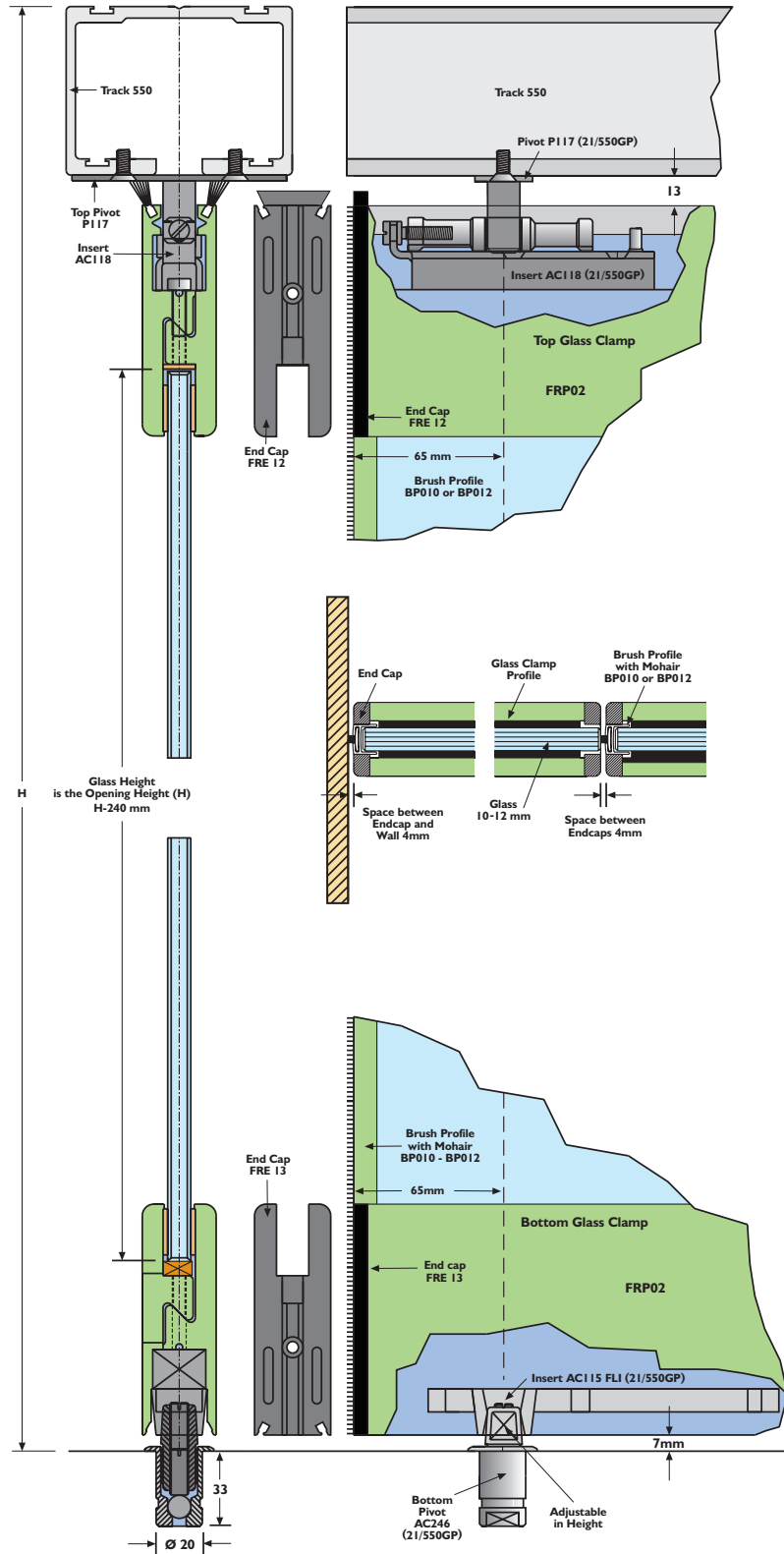
System E



## Multidirectional door



## Swing door



# TRAVERSE MULTIDIRECTIONAL 135°

for top-hung stacking glass doors up to 250kg

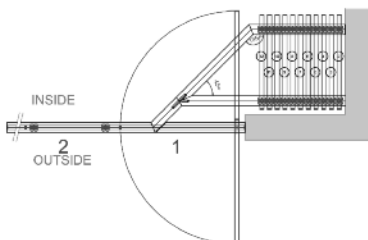
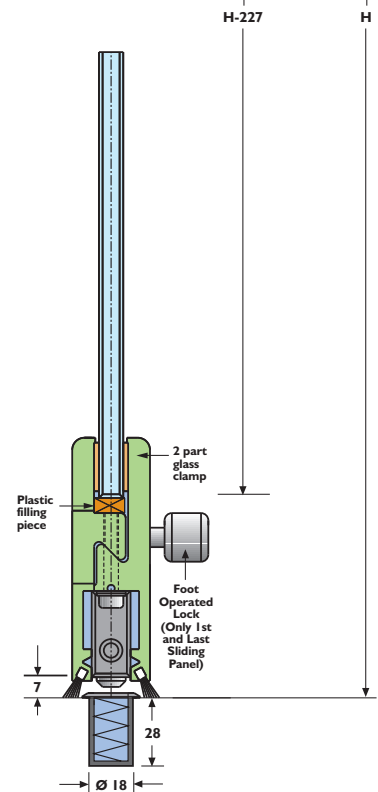
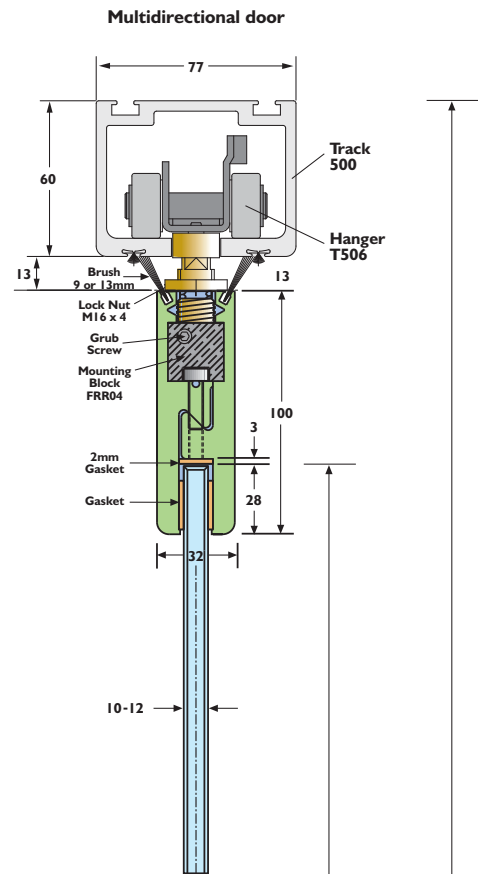
Traverse is a system that acts as a mobile partition, using suspended glass panels without the need for a floor guide. The system is suitable for both internal and external partitions and has a variety of options for panel storage, without obstructing the entrance. Panels can be stored in such a way that they are out of sight or placed in a separate concealed location.

## Specification

Maximum door weight when using 2 hangers per leaf	<b>250kg</b>
Maximum door height	<b>toughened glass - 3000mm</b>
Maximum swing door width	<b>1000mm</b>
Glass thickness	<b>toughened glass - 10mm and 12mm</b>

## Technical information

		Code
Track	Anodised aluminium	<b>500</b>
Brackets	Face fix (at 500mm intervals)	<b>1A/500</b>
	Soffit fix	<b>3S/500</b>
Hangers		<b>T506</b>
Pivots	Glass pivot set	<b>21/500GP</b>
Glass Profile		<b>FRP02</b>









# FLEXIROL MULTIDIRECTIONAL 135°

for top-hung glass doors up to 500kg

Flexirol Multidirectional 135° is designed for heavy glass panels, in residential or commercial environments requiring 135° flexible movement options. The system is ideal for hotels, conference centres, showrooms, shop fronts or internal room partitions and also benefits from a stacking formation, which allows the doors to be stored clear of the opening.

## Specification

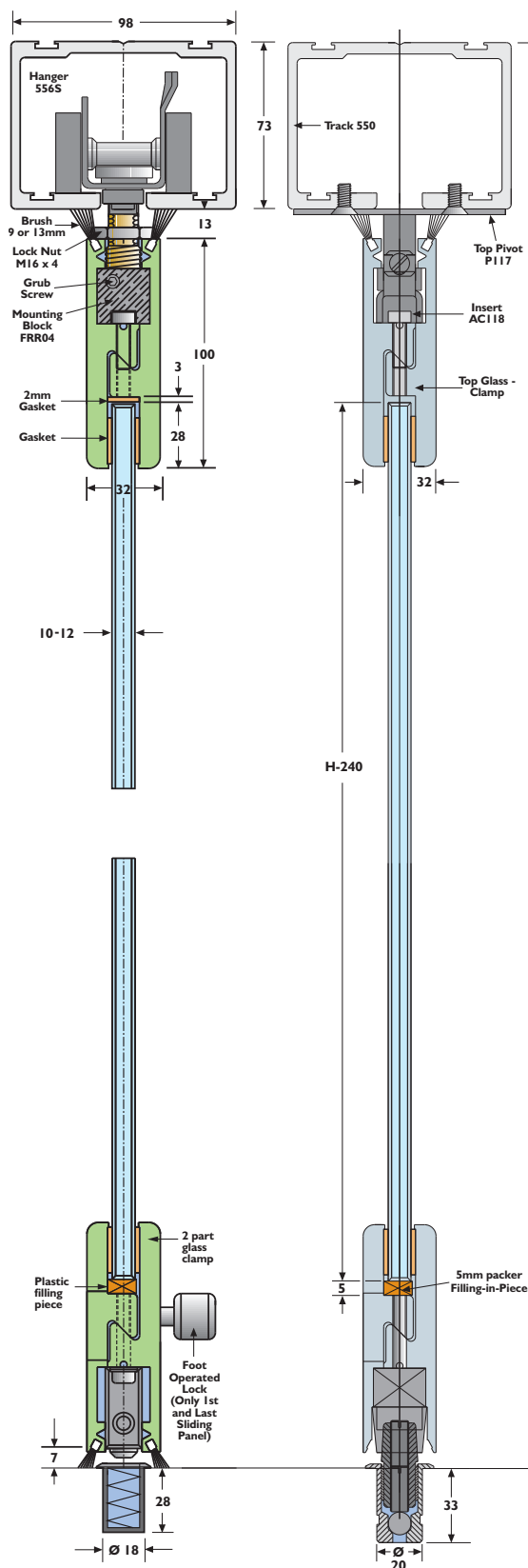
Maximum door weight when using 2 hangers per leaf	<b>500kg</b>
Maximum door height	<b>toughened glass - 4000mm</b>
Maximum swing door width	<b>1200mm</b>
Glass thickness	<b>toughened glass - 10mm and 12mm</b>

## Technical information

		Code
Track	Mill finish or white aluminium	<b>550</b>
Brackets	Face fix	<b>1A/550</b>
	Soffit fix	<b>3S/550</b>
Hangers	135° hanger	<b>556S</b>
Glass Profile		<b>FRP02</b>
Pivots	Glass pivot set	<b>21/550GP</b>



## Multidirectional door

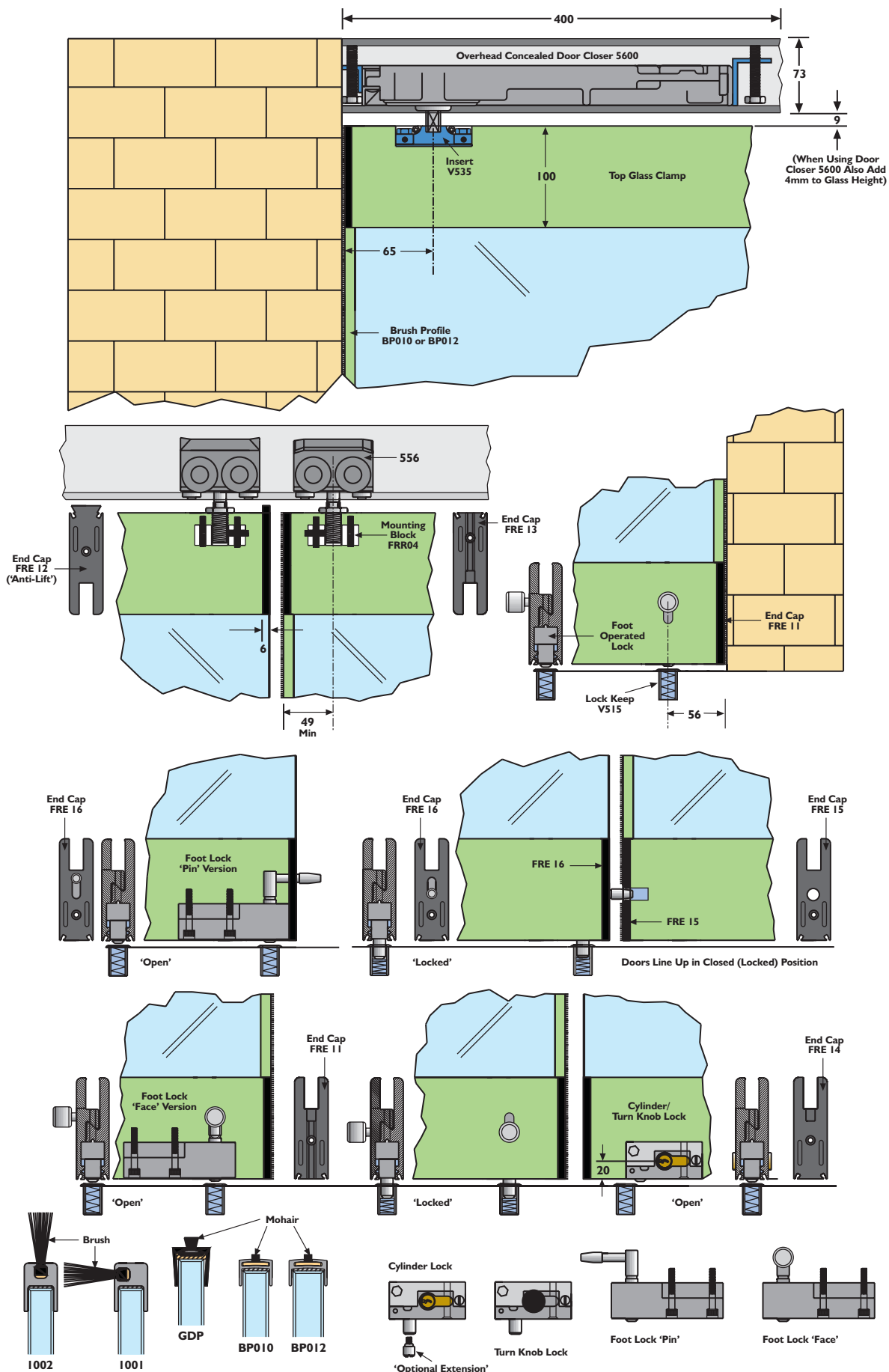


## Swing door



## FLEXIROL MULTIDIRECTIONAL ACCESSORIES

for top-hung glass doors up to 500kg





## ACCESSORIES

## Locks and Lock Accessories

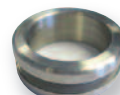
		Code
Cylinder lock (left)	Aluminium (Zenith only)	<b>507L</b>
Cylinder lock (right)	Aluminium (Zenith only)	<b>507R</b>
Glass door lock	Polished brass	<b>618PB</b>
Glass door lock receiver	Polished brass	<b>619PB</b>
Glass door lock	Silver anodised	<b>618SA</b>
Glass door lock receiver	Silver anodised	<b>619SA</b>
Glass door lock	Polished chrome	<b>618PC</b>
Glass door lock receiver	Polished chrome	<b>619PC</b>
Glass door lock	Satin chrome	<b>618SC</b>
Glass door lock receiver	Satin chrome	<b>619SC</b>

## Flush Pulls

		Code
Glass flush pull	Stainless steel Ø 65mm through glass	<b>GPI</b>
	glass cutting Ø 55mm	
	Stainless steel Ø 57mm blind	<b>GP2</b>
	glass cutting Ø 46mm	
Glass flush pull	Aluminium Ø 29mm (Zenith only)	<b>27</b>
	glass cutting Ø 22mm	



Lock 618



Flush pull GPI



Flush pull GP2



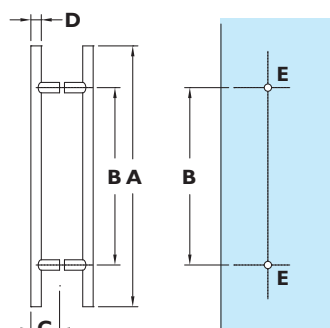
Flush pull 27

## ACCESSORIES

## Handles

Code

Glass door handle set Ø 25mm/600mm length	Chrome plated	<b>H25/600CP</b>
Glass door handle set Ø 30mm/600mm length	Chrome plated	<b>H30/600CP</b>
Glass door handle set Ø 20mm/700mm length	Stainless steel	<b>H20/700SS</b>
Glass door handle set Ø 30mm/700mm length	Stainless steel	<b>H30/700SS</b>

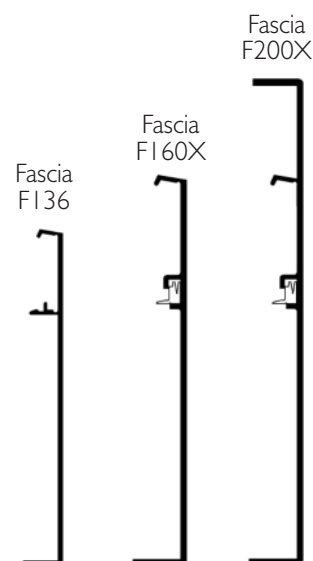


	A	B	C	D	E
<b>H25</b>	600	400	70	Ø25	Ø11
<b>H30</b>	600	400	75	Ø30	Ø11
<b>H20</b>	700	540	55	Ø20	Ø14
<b>H30</b>	700	500	65	Ø30	Ø14

## Fascias - satin anodised finish

Code

Husky glass fascia	1500mm	<b>F136/1500</b>
	1800mm	<b>F136/1800</b>
	2000mm	<b>F136/2000</b>
	2500mm	<b>F136/2500</b>
	3000mm	<b>F136/3000</b>
Husky endcap pack		<b>F136/ECP</b>
Pacer soffit fixed anodised fascia	2000mm	<b>F160X/2000</b>
	2500mm	<b>F160X/2500</b>
	3000mm	<b>F160X/3000</b>
	3500mm	<b>F160X/3500</b>
	4000mm	<b>F160X/4000</b>
Pacer F160 endcap pack		<b>F160ECP</b>
Pacer face fixed anodised fascia	2000mm	<b>F200X/2000</b>
	2500mm	<b>F200X/2500</b>
	3000mm	<b>F200X/3000</b>
	3500mm	<b>F200X/3500</b>
	4000mm	<b>F200X/4000</b>
Pacer F200 endcap pack		<b>F200ECP</b>





# HENDERSON

## **P C Henderson Limited**

UK Technical Sales Team

Tel: 0191 377 7345

Fax: 0191 377 3116

e-mail: [sales@pchenderson.com](mailto:sales@pchenderson.com)

Durham Road

Bowburn

Co. Durham

DH6 5NG

## **PC Henderson Ireland Ltd**

Tel: +353 (0)1 643 6816

Fax: +353 (0)1 626 0455

e-mail: [sales@pchenderson.ie](mailto:sales@pchenderson.ie)

Westlink Industrial Estate

Kylemore Road

Dublin 10

Ireland

## **Henderson Nederland BV**

Tel: +31 (0) 497 332020

Fax: +31 (0) 497 332029

e-mail: [sales@henderson.nl](mailto:sales@henderson.nl)

Postbus 258

5530 AG Bladel

Holland

## **International**

Tel: +44 (0)191 377 7346

Fax: +44 (0)191 377 0755

e-mail: [international@pchenderson.com](mailto:international@pchenderson.com)

