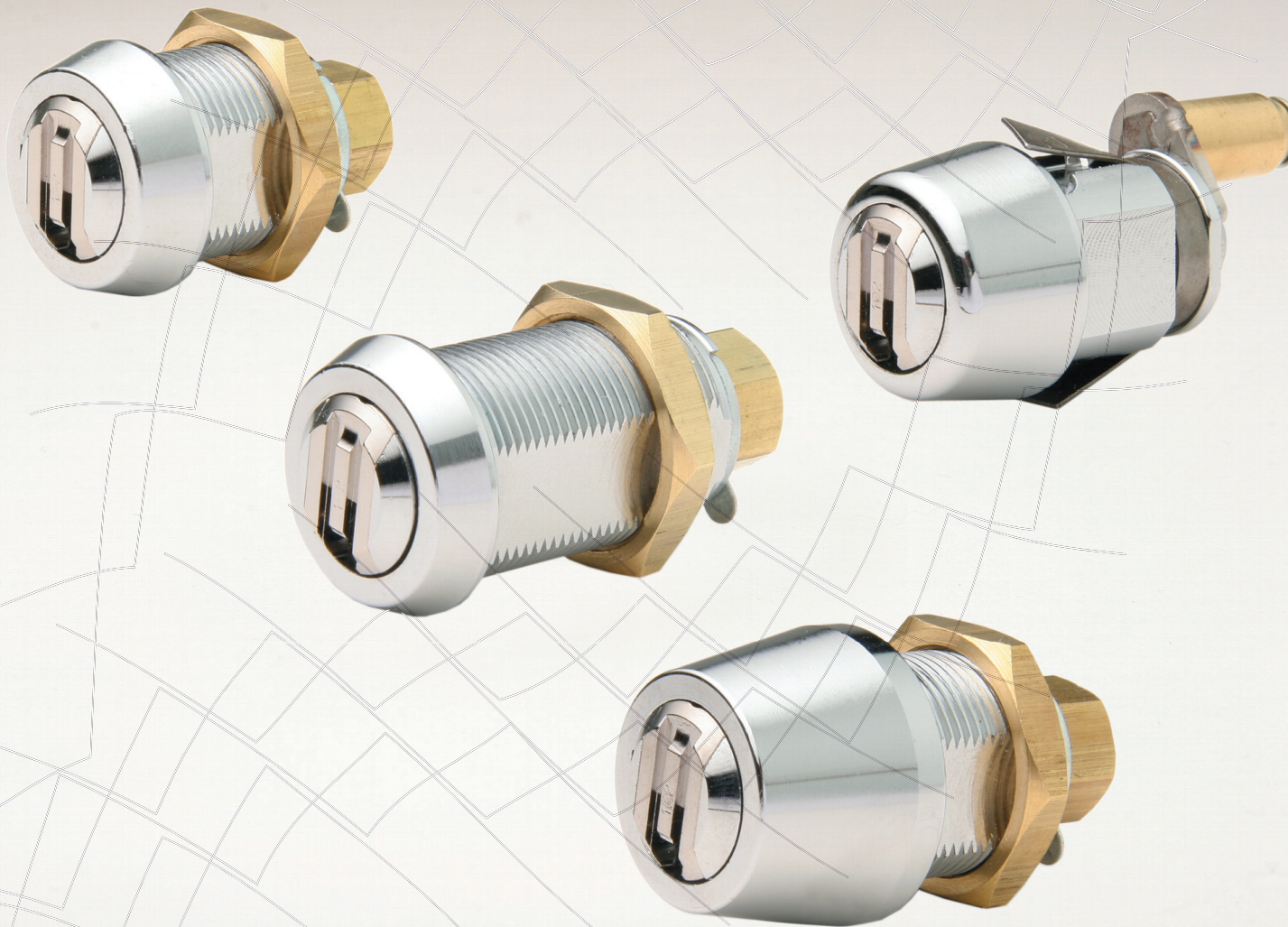


High Security Camlocks



Manufactured by
Australian Lock Company Pty Ltd

17 Doyle Ave, (PO Box 479) Unanderra NSW 2526, Australia.
Tel: 61 2 4272 4922 **Fax:** 61 2 4272 4677

The BiLock range of high security lock cylinders provide for applications that require optimum security with key restrictions and are fully compatible with each other.

Camlock #3215 #3219 #32R19 #3227

Camlocks are designed as a high security alternative for use in the protection of money and electronic or sensitive material where a simple cam lock action is required. All camlocks offer either Standard to Quick Change Core (QCC) option.

Typical Applications

Poker and gaming machines	Security key monitor	Communication cables and/or towers
Video machine	Alarm control cabinets	Personnel lockers
Cash boxes	Parking metres	Key storage cabinets
Vending machines	Petrol pump meters	Secure briefcases
Currency changers	Cash registers	Filing cabinets
Utility meter locks	Pay telephones	

Security Advantages

- All model are ASIO rated. An Australian Government model is available for use on Class "C" security containers.
- Strong legal protection with both international patents and design registrations offers unsurpassed protection against unauthorised duplication.
- Specialised (unique) proprietary key cutting and forming equipment supplied to accredited BiLock agents only.
- Virtually impossible to pick, rap or read codes through the keyway.
- All 12 pins are equal length, chisel shaped & contain false holes which must interact with two side bars simultaneously to operate lock.
- Dual bladed keyway is highly resistant to impressioning.
- Powerful master keying capabilities provide over 16.7 million real key combinations per key profile.
- Manufacturer's Guarantee and warranty.
- Quality Assured manufacturer with exacting tolerances.
- A huge range of compatible cylinder types is available to suit most hardware on the market today.
- BiLock's 8,500 key head colour combination options ensure our systems provide easy visual key identification.
- Features BiLock's Quick Change Core (QCC) option.
- BiLock has received two Australian Design Awards for excellence.
- Recommended by many of Australia's leading architectural firms.

Product Details

Materials

Body: Brass

Plug: Brass,

Cams: Zinc Plated Steel

Key blank: Nickel Silver

Finishes

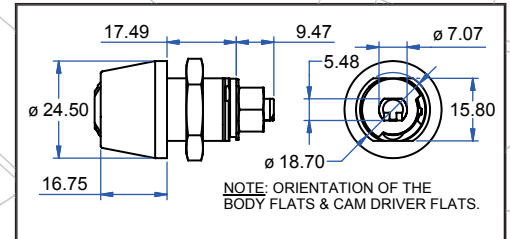
Chrome Plate (CP)

Cams

Four types available:

Straight: 25-60mm Offset: 28-40mm

Hook: 19-54mm Spigot (2 Types)



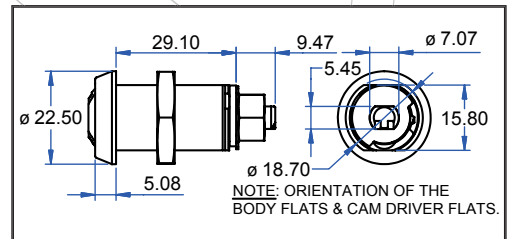
#3215

Prod No. Operation

32159 90° Movement (12 pin)

32159D 180° Movement (12 pin) 2 Position Key Withdrawal

32151 180° Movement (12 pin)



#3219

Prod No. Operation

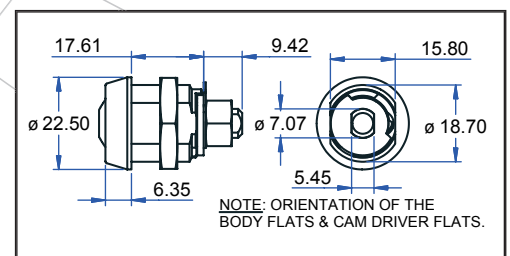
32199 90° Movement (12 pin)

32199D 90° Movement (12 pin) 2 Position Key Withdrawal

32191 180° Movement (12 pin)

32R19 Government Approval "C" Class.

Information available on request.



#3227

Prod No. Operation

32271 180° Movement (8 Pin)

32279 90° Movement (8 Pin)

Products are available in First Generation, First Generation QCC, New Generation and New Generation QCC.